

## Recombinant Mouse Pah protein, His-tagged

Cat. No. Pah-5636M Lot. No. (See product label)

### SPECIFICATION

<b>Product Overview</b>	Recombinant Mouse Pah protein(P16331)(2-453aa), fused with C-terminal His tag, was expressed in Yeast.
<b>Species</b>	Mouse
<b>Source</b>	Yeast
<b>ProteinLength</b>	2-453aa
<b>Form</b>	If the delivery form is liquid, the default storage buffer is Tris/PBS-based buffer, 5%-50% glycerol. If the delivery form is lyophilized powder, the buffer before lyophilization is Tris/PBS-based buffer, 6% Trehalose, pH 8.0.
<b>Molecular Mass</b>	53.4 kDa
<b>Purity</b>	Greater than 90% as determined by SDS-PAGE.
<b>Storage</b>	Store at -20°C/-80°C upon receipt, aliquoting is necessary for mutiple use. Avoid repeated freeze-thaw cycles.
<b>Reconstitution</b>	We recommend that this vial be briefly centrifuged prior to opening to bring the contents to the bottom. Please reconstitute protein in deionized sterile water to a concentration of 0.1-1.0 mg/mL. We recommend to add 5-50% of glycerol (final concentration) and aliquot for long-term storage at -20°C/-80°C.

 Tel: 1-631-559-9269 1-516-512-3133

 Email: [info@creative-biomart.com](mailto:info@creative-biomart.com)  Fax: 1-631-938-8127

 45-1 Ramsey Road, Shirley, NY 11967, USA



**AA Sequence**

AAVVLENGVLRSRKLSDFGQETSYIEDNSNQNGAVSLIFSLKEEVGALAKVLRRLFEEENE  
INLTHIESRPSRLNKDEYEFFTYLDKRSPVLSIIKSLRNDIGATVHELSDRDKKNTV  
PWFPRTIQELDRFANQILSYGAELDADHPGFKDPVYRARRKQFADIAYNYRHGQPIP  
RVEYTEEERKTWGTVFRTLKALYKTHACYEHNHIFPILLEKYCGFREDNIPQLEDVVSQ  
FLQTCTGFRLRPVAGLLSSRDFLGGLAFRVFHCTQYIRHGSKPMYTPEPDICHELLG  
HVPLFSDRSFAQFSQEIGLASLGAPDEYIEKLATYWFTEFGLCKEGDSIKAYGAGL  
LSSFGEQYCLSDKPKLLPLELEKTACQEYTVTEFQPLYYVAESFNDAKEKVRTFAA  
TIPRPFVRYDPYTQRVEVLDNTQQLKILADSINSEVGILCHALQKIKS

**GENE INFORMATION**

**Gene Name** Pah phenylalanine hydroxylase [ *Mus musculus* ]

**Official Symbol** Pah

**Synonyms** PAH; phenylalanine hydroxylase; phenylalanine-4-hydroxylase; phe-4-monooxygenase; AW106920;

**Gene ID** 18478

**mRNA Refseq** NM\_008777

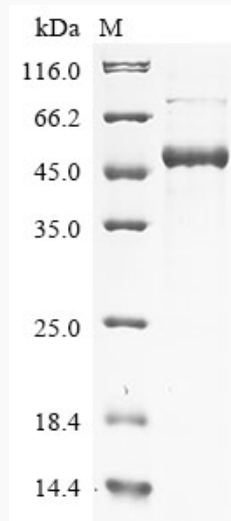
**Protein Refseq** NP\_032803

Tel: 1-631-559-9269 1-516-512-3133

Email: [info@creative-biomart.com](mailto:info@creative-biomart.com) Fax: 1-631-938-8127

45-1 Ramsey Road, Shirley, NY 11967, USA

**SDS-PAGE**



 Tel: 1-631-559-9269 1-516-512-3133

 Email: [info@creative-biomart.com](mailto:info@creative-biomart.com)  Fax: 1-631-938-8127

 45-1 Ramsey Road, Shirley, NY 11967, USA