

Recombinant Rat Pam Protein, His-tagged

Cat. No. Pam-1170R **Lot. No.** (See product label)

SPECIFICATION

| | |
|-------------------------|--|
| Product Overview | Recombinant Rat Pam Protein (Phe36-Val820) with His tag was expressed in 293F. |
| Species | Rat |
| Source | HEK293 |
| ProteinLength | Phe36-Val820 |
| Description | Enables several functions, including metal ion binding activity; peptidylamidoglycolate lyase activity; and peptidylglycine monooxygenase activity. Involved in several processes, including animal organ development; fatty acid primary amide biosynthetic process; and peptide amidation. Located in several cellular components, including perikaryon; secretory granule membrane; and trans-Golgi network. Biomarker of hypothyroidism. Orthologous to human PAM (peptidylglycine alpha-amidating monooxygenase). |
| Form | Freeze-dried powder |
| Molecular Mass | Predicted Molecular Mass: 77.7 kDa; Accurate Molecular Mass: 88 kDa |
| Purity | > 95% |
| Applications | Positive Control; Immunogen; SDS-PAGE; WB. |
| Stability | The thermal stability is described by the loss rate. The loss rate was determined by |

 Tel: 1-631-559-9269 1-516-512-3133

 Email: info@creative-biomart.com  Fax: 1-631-938-8127

 45-1 Ramsey Road, Shirley, NY 11967, USA

accelerated thermal degradation test, that is, incubate the protein at 37 centigrade for 48h, and no obvious degradation and precipitation were observed. The loss rate is less than 5% within the expiration date under appropriate storage condition.

Storage

Avoid repeated freeze/thaw cycles. Store at 2-8 centigrade for one month. Aliquot and store at -80 centigrade for 12 months.

Storage Buffer

20mM Tris, 150mM NaCl, pH8.0, containing 1mM EDTA, 1mM DTT, 0.01% SKL, 5% Trehalose and Proclin300.

Reconstitution

Reconstitute in 20mM Tris, 150mM NaCl (pH8.0) to a concentration of 0.1-1.0 mg/mL. Do not vortex.

GENE INFORMATION

Gene Name

Pam peptidylglycine alpha-amidating monooxygenase [*Rattus norvegicus* (Norway rat)]

Official Symbol

Pam

Synonyms

PAM; peptidylglycine alpha-amidating monooxygenase; peptidyl-glycine alpha-amidating monooxygenase;

Gene ID

25508

mRNA Refseq

NM_013000

Protein Refseq

NP_037132

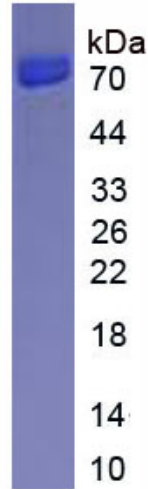
UniProt ID

P14925

 Tel: 1-631-559-9269 1-516-512-3133

 Email: info@creative-biomart.com  Fax: 1-631-938-8127

 45-1 Ramsey Road, Shirley, NY 11967, USA



Tel: 1-631-559-9269 1-516-512-3133

Email: info@creative-biomart.com Fax: 1-631-938-8127

45-1 Ramsey Road, Shirley, NY 11967, USA