

Recombinant Rat Pam protein, 8xHis-tagged

Cat. No. Pam-4545R **Lot. No.** (See product label)

SPECIFICATION

Product Overview	Recombinant Rat Pam protein(P14925)(36-820 aa), fused with C-terminal His tag, was expressed in Mammalian Cells.
Species	Rat
Source	Mammalian Cells
ProteinLength	36-820 aa
Form	For liquid formulations, the standard storage buffer consists of a Tris or PBS based solution supplemented with 5-50% glycerol. When provided as lyophilized powder, the product undergoes freeze-drying from a Tris- or PBS-based formulation containing 6% trehalose, adjusted to pH 8.0 prior to the lyophilization process.
Molecular Mass	90.4 kDa
AASequence	FKETTRSFSNECLGTIGPVTPPLDASDFALDIRMPGVTPKESDTYFCMSMRLPVDEEA FVIDFKPRASMDTVHHMLLFGCNMPSSTGSYWFCDEGTCTDKANILYAWARNAPPT RLPKGVGFRVGGGETGSKYFVLQVHYGDISAFRDNHKDCSGVSVHLTRVPQPLIAGM YLMMSVDTVIPPGEKVVNADISCQYKMYPMHVFAYRVHTHHLGKVVSGYRVRNGQ WTLIGRQNPQLPQAFYPVEHPVDVTFGDILAARCVFTGEGRTEATHIGGTSSDEMC NLYIMYYMEAKYALSFMTCTKNVAPDMFRTIPAEANIPIPKPDMVMMHGHHEAEN KEKSALMQPKQGEEVLEQGDYFYSLLSKLLGEREDVHVHKYNPTEKTESGSDLVA EIANVVQKKDLGRSDAREGAEHEEWGNAILVRDRIHRFHQLESTLRPAESRAFSFQ QPGEGPWEPEPSGDFHVEEELDWPVYLLPGQVSGVALDSKNNLVIFHRGDHVW

 Tel: 1-631-559-9269 1-516-512-3133

 Email: info@creative-biomart.com  Fax: 1-631-938-8127

 45-1 Ramsey Road, Shirley, NY 11967, USA

DGNSFDSKFVYQQRGLGPIEEDTILVIDPNNAEILQSSGKNLFYLPHGLSIDTDGNYW
 VTDVALHQVFKLDPHSKEGPLLLILGRSMQPGSDQNHFCQPTDVAVEPSTGAVFVSD
 GYCNSRIVQFSPSGKFVTQWGEESSGSSPRPGQFSVPHSLALVPHLDQLCVADRE
 NGRIQCFKTDTKFVREIKHASFGRNVFAISYIPGFLFAVNGKPYFGDQEPVQGFVM
 NFSSGEIIDVFKPVRKHFDMPHDIVASEDGTVYIGDAHTNTVWKFTLTKMEHRVS

Purity Greater than 95% as determined by SDS-PAGE.

Storage Store at -20°C/-80°C upon receipt, aliquoting is necessary for mutiple use. Avoid repeated freeze-thaw cycles.

Reconstitution Please reconstitute protein indeionized sterile water to a concentration of 0.1-1.0 mg/mL. Aliquot for long-term storage at -80°C.

GENE INFORMATION

Gene Name Pam peptidylglycine alpha-amidating monooxygenase [*Rattus norvegicus*]

Official Symbol Pam

Synonyms PAM; peptidylglycine alpha-amidating monooxygenase; peptidyl-glycine alpha-amidating monooxygenase;

Gene ID 25508

mRNA Refseq NM_013000

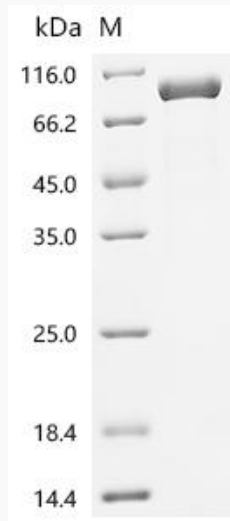
Protein Refseq NP_037132

 Tel: 1-631-559-9269 1-516-512-3133

 Email: info@creative-biomart.com  Fax: 1-631-938-8127

 45-1 Ramsey Road, Shirley, NY 11967, USA

SDS-PAGE



 Tel: 1-631-559-9269 1-516-512-3133

 Email: info@creative-biomart.com  Fax: 1-631-938-8127

 45-1 Ramsey Road, Shirley, NY 11967, USA