

Adult Mouse Pancreas Whole Cell Lysate

Cat. No. Pancreas-075MCL Lot. No. (See product label)

SPECIFICATION

Product Overview

Ready-to-use whole cell lysates are derived from cell lines or tissues using highly refined extraction protocols to ensure exceptionally high quality, protein integrity and lot-to-lot reproducibility. All extracts are tested by SDS-PAGE using 4-20% gradient gels and immunoblot analysis using antibodies to key cell signaling components to confirm the presence of both high molecular weight and low molecular weight proteins.

Species Mouse

Form Liquid (sterile filtered)

Specificity

Tissues were washed exhaustively with PBS to remove blood and other debris. A lysate was prepared by homogenizing the tissue and washing the cells in cold PBS. Washed cells were incubated at 4 centigrade in modified RIPA buffer to lyse the cells. Protein integrity is ensured using a cocktail of protease inhibitors with broad specificity for the inhibition of aspartic, cysteine, and serine proteases as well as aminopeptidases (0.1 mM AEBSF HCl, 0.08 μ M Aprotinin, 5 μ M Bestatin, 1.5 μ M E-64, 2 μ M Leupeptin Hemisulfate and 1 μ M Pepstatin A). The following phosphatase inhibitors were also added: 1 mM NaF and 1 mM Na₃VO₄. Cell debris was removed by centrifugation and membrane filtration. Protein concentration was determined by Lowry assay using a commercially available kit. The protein concentration was adjusted to 2 mg/mL and then an equal volume of 2x SDS-PAGE sample buffer was added.

 Tel: 1-631-559-9269 1-516-512-3133

 Email: info@creative-biomart.com  Fax: 1-631-938-8127

 45-1 Ramsey Road, Shirley, NY 11967, USA

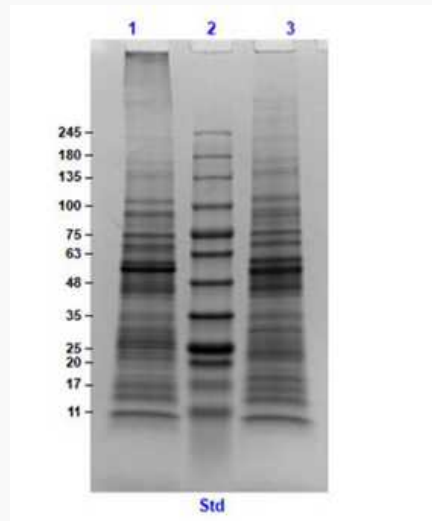
Applications	SDS-PAGE
Cell Line	Primary tissue
Lysate Fractionation	Whole Cell Lysate
Lysate Stimulation	Not Stimulated
Culture Type	Primary Tissue
Induction	None (Control)
Concentration	1.0 mg/mL by BCA assay
Buffer	1× SDS-PAGE Sample Buffer (62.5 mM Tris HCl, 2% SDS, 10% Glycerol and 0.005% bromophenol blue, pH 6.8)
Preservative	None
Stabilizer	10% (v/v) Glycerol
Shipping	Dry Ice
Storage	Store vial at -70 centigrade or COLDER. For extended storage, aliquot contents to minimize freeze/thaw cycles.
Expiration	Expiration date is three months from date of receipt.

 Tel: 1-631-559-9269 1-516-512-3133

 Email: info@creative-biomart.com  Fax: 1-631-938-8127

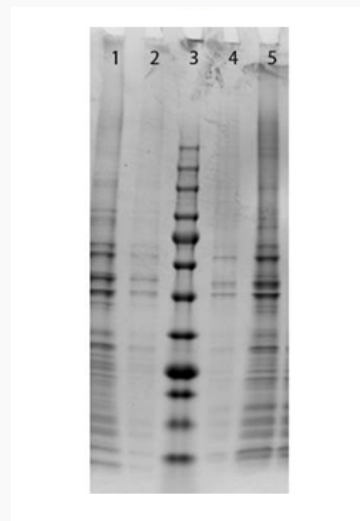
 45-1 Ramsey Road, Shirley, NY 11967, USA

SDS-PAGE



SDS-Page of Mouse Pancreas, adult, Whole Cell Lysate.
Lane 1: Reduced Mouse Pancreas, adult, Whole Cell Lysate [10 µg].
Lane 2: Opal Prestained Molecular Weight Marker.
Lane 3: Non-reduced Mouse Pancreas, adult, Whole Cell Lysate [10 µg].
4-20% SDS-PAGE gel, Coomassie Stained.

SDS-PAGE



 Tel: 1-631-559-9269 1-516-512-3133

 Email: info@creative-biomart.com  Fax: 1-631-938-8127

 45-1 Ramsey Road, Shirley, NY 11967, USA



SDS-Page of Mouse Pancreas, adult, Whole Cell Lysate.

Lane 1: Mouse Pancreas WCL Reduced, 5x loading.


Lane 2: Mouse Pancreas WCL Reduced, 1x loading.

Lane 3: Molecular Weight Opal pre-stained Ladder.


Lane 4: Mouse Pancreas WCL Non-Reduced, 1x loading.

Lane 5: Mouse Pancreas WCL Non-Reduced, 5x loading.

4-20% SDS-PAGE gel, Coomassie Stained.

 Tel: 1-631-559-9269 1-516-512-3133

 Email: info@creative-biomart.com  Fax: 1-631-938-8127

 45-1 Ramsey Road, Shirley, NY 11967, USA