

Recombinant Rat Panx1 protein, His-tagged

Cat. No. Panx1-1349R Lot. No. (See product label)

SPECIFICATION

Product Overview	Recombinant Rat Panx1 aa. (Ala77~Asp260 (Accession # P60570) fused with N-terminal His tag was produced in E. coli cells.
Species	Rat
Source	E.coli
ProteinLength	Ala77~Asp260
Description	The protein encoded by this gene is a plasma membrane protein that is a structural component of gap junctions. The encoded protein acts as a homodimer or as a heterodimer with other isoforms or proteins. Two additional variants have been found, and the isoforms expressed from them are found in the cytoplasm. It is thought that these two isoforms could attenuate the actions of the membrane-bound protein.
Form	Freeze-dried powder
Molecular Mass	Predicted Molecular Mass: 22.4kDa
Endotoxin	<1.0EU per 1g (determined by the LAL method)
Purity	>95%
Characteristic	The isoelectric point is 7.1.

 Tel: 1-631-559-9269 1-516-512-3133

 Email: info@creative-biomart.com  Fax: 1-631-938-8127

 45-1 Ramsey Road, Shirley, NY 11967, USA

Applications	SDS-PAGE; WB; ELISA; IP.
Stability	The thermal stability is described by the loss rate. The loss rate was determined by accelerated thermal degradation test, that is, incubate the protein at 37°C for 48h, and no obvious degradation and precipitation were observed. The loss rate is less than 5% within the expiration date under appropriate storage condition.
Storage	Avoid repeated freeze/thaw cycles. Store at 2-8°C for one month. Aliquot and store at -80°C for 12 months.
Storage buffer	Supplied as lyophilized form in PBS, pH7.4, containing 5% trehalose, 0.01% sarcosyl.
Reconstitution	Reconstitute in sterile PBS, pH7.2-pH7.4.

GENE INFORMATION

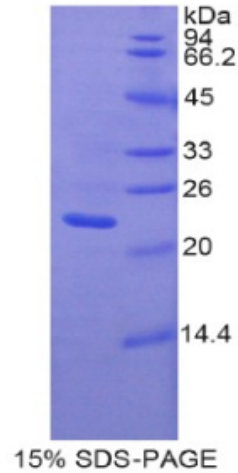
Gene Name	Panx1 Pannexin 1 [<i>Rattus norvegicus</i> (Norway rat)]
Official Symbol	Panx1
Synonyms	Panx1; Pannexin 1; px1; pannexin-1
Gene ID	315435
mRNA Refseq	NM_199397.2
Protein Refseq	NP_955429.1
UniProt ID	P60570

 Tel: 1-631-559-9269 1-516-512-3133

 Email: info@creative-biomart.com  Fax: 1-631-938-8127

 45-1 Ramsey Road, Shirley, NY 11967, USA

SDS-PAGE



 Tel: 1-631-559-9269 1-516-512-3133

 Email: info@creative-biomart.com  Fax: 1-631-938-8127

 45-1 Ramsey Road, Shirley, NY 11967, USA