

## Recombinant Rat Park7 protein, His-tagged

**Cat. No.** Park7-1805R    **Lot. No.** (See product label)

### SPECIFICATION

<b>Product Overview</b>	Recombinant Rat Park7 aa. (Met1~Asp189 (Accession # O88767)) fused with N-terminal His tag was produced in E. coli cells.
<b>Species</b>	Rat
<b>Source</b>	E.coli
<b>ProteinLength</b>	Met1~Asp189
<b>Description</b>	Displays a specific localization pattern to the anterior-ventral surface of the equatorial segment; may play a role in sperm-egg. interactions and fertilization
<b>Form</b>	Freeze-dried powder
<b>Molecular Mass</b>	21.49kDa as determined by SDS-PAGE reducing conditions.
<b>Endotoxin</b>	<1.0EU per 1ug (determined by the LAL method)
<b>Purity</b>	>97%
<b>Applications</b>	SDS-PAGE; WB; ELISA; IP.
<b>Stability</b>	The thermal stability is described by the loss rate. The loss rate was determined by accelerated thermal degradation test, that is, incubate the protein at 37°C for 48h, and no obvious degradation and precipitation were observed. The loss rate is less

 Tel: 1-631-559-9269    1-516-512-3133

 Email: [info@creative-biomart.com](mailto:info@creative-biomart.com)     Fax: 1-631-938-8127

 45-1 Ramsey Road, Shirley, NY 11967, USA

than 5% within the expiration date under appropriate storage condition.

**Storage**

Store at 4oC for short term storage (1-2 weeks). Aliquot and store at -20oC or -80oC for long term storage. Avoid repeated freeze/thaw cycles.

**Storage buffer**

Supplied as lyophilized form in PBS, pH 7.4.

**Reconstitution**

Reconstitute in PBS.

## GENE INFORMATION

**Gene Name**

Park7 Parkinsonism associated deglycase [ *Rattus norvegicus* (Norway rat) ]

**Official Symbol**

Park7

**Synonyms**

Park7; Parkinsonism associated deglycase; Dj1; CAP1; DJ-1; SP22; protein/nucleic acid deglycase DJ-1; Parkinson disease (autosomal recessive, early onset) 7; contraception-associated protein 1; fertility protein SP22; maillard deglycase; parkinson disease protein 7 homolog; parkinson protein 7; protein DJ-1; protein deglycase DJ-1

**Gene ID**

117287

**mRNA Refseq**

NM\_001277250.1

**Protein Refseq**

NP\_001264179.1

**UniProt ID**

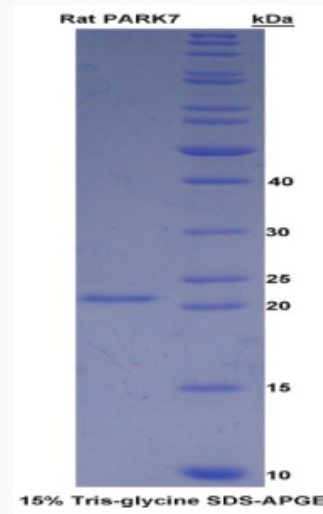
O88767

 Tel: 1-631-559-9269 1-516-512-3133

 Email: [info@creative-biomart.com](mailto:info@creative-biomart.com)  Fax: 1-631-938-8127

 45-1 Ramsey Road, Shirley, NY 11967, USA

**SDS-PAGE**



 Tel: 1-631-559-9269 1-516-512-3133

 Email: [info@creative-biomart.com](mailto:info@creative-biomart.com)  Fax: 1-631-938-8127

 45-1 Ramsey Road, Shirley, NY 11967, USA