

Recombinant Mouse Park7 protein, His-tagged

Cat. No. Park7-1901M Lot. No. (See product label)

SPECIFICATION

| | |
|-------------------------|--|
| Product Overview | Recombinant Mouse Park7 protein(Met1~Asp189), fused with N-terminal His tag, was expressed in E.coli. |
| Species | Mouse |
| Source | E.coli |
| ProteinLength | Met1~Asp189 |
| Form | PBS, pH7.4, containing 0.01% SKL, 1mM DTT, 5% Trehalose and Proclin300. |
| Molecular Mass | 24kDa |
| Endotoxin | <1.0EU per 1g (determined by the LAL method) |
| Purity | > 97% |
| Storage | Avoid repeated freeze/thaw cycles. Store at 2-8°C for one month. Aliquot and store at -80°C for 12 months. |
| Reconstitution | Reconstitute in 10mM PBS (pH7.4) to a concentration of 0.1-1.0 mg/mL. Do not vortex. |

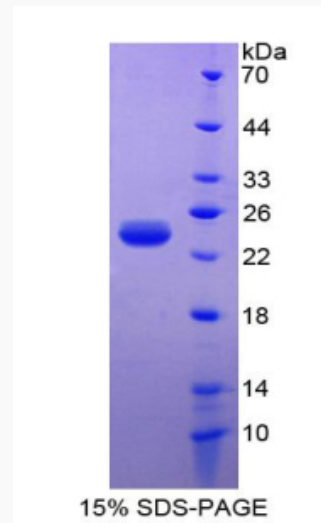
GENE INFORMATION

 Tel: 1-631-559-9269 1-516-512-3133

 Email: info@creative-biomart.com  Fax: 1-631-938-8127

 45-1 Ramsey Road, Shirley, NY 11967, USA

| | |
|------------------------|--|
| Gene Name | Park7 Parkinson disease (autosomal recessive, early onset) 7 [<i>Mus musculus</i>] |
| Official Symbol | Park7 |
| Synonyms | Park7; Dj1; DJ-1 |
| Gene ID | 57320 |
| mRNA Refseq | NM_020569 |
| Protein Refseq | NP_065594 |
| UniProt ID | Q99LX0 |

SDS-PAGE


 Tel: 1-631-559-9269 1-516-512-3133

 Email: info@creative-biomart.com  Fax: 1-631-938-8127

 45-1 Ramsey Road, Shirley, NY 11967, USA