

Recombinant Rat Pax6 Protein, His-tagged

Cat. No. Pax6-764R Lot. No. (See product label)

SPECIFICATION

Product Overview	Recombinant Rat Pax6(Met1~Leu130) fused with His tag at N-terminal was expressed in E. coli.
Species	Rat
Source	E.coli
ProteinLength	Met1~Leu130
Form	PBS, pH7.4, containing 0.01% SKL, 1mM DTT, 5% Trehalose and Proclin300.
Molecular Mass	18.0kDa
Endotoxin	<1.0EU per 1g (determined by the LAL method)
Purity	> 96%
Applications	Positive Control; Immunogen; SDS-PAGE; WB. If bio-activity of the protein is needed, please check active protein.
Stability	The thermal stability is described by the loss rate. The loss rate was determined by accelerated thermal degradation test, that is, incubate the protein at 37 centigrade for 48h, and no obvious degradation and precipitation were observed. The loss rate is less than 5% within the expiration date under appropriate storage condition.

 Tel: 1-631-559-9269 1-516-512-3133

 Email: info@creative-biomart.com  Fax: 1-631-938-8127

 45-1 Ramsey Road, Shirley, NY 11967, USA

Storage	Avoid repeated freeze/thaw cycles. Store at 2-8 centigrade for one month. Aliquot and store at -80 centigrade for 12 months.
----------------	--

Reconstitution	Reconstitute in PBS or others.
-----------------------	--------------------------------

GENE INFORMATION

Gene Name	Pax6 paired box 6 [Rattus norvegicus]
------------------	---

Official Symbol	Pax6
------------------------	------

Synonyms	PAX6; paired box 6; paired box protein Pax-6; oculorhombin; paired box gene 6; paired box homeotic gene 6;
-----------------	--

Gene ID	25509
----------------	-------

mRNA Refseq	NM_013001
--------------------	-----------

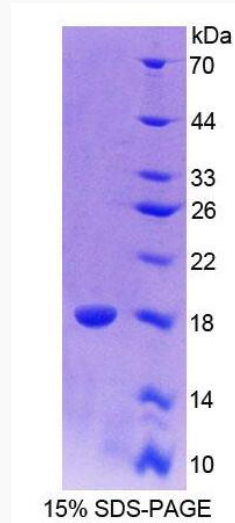
Protein Refseq	NP_037133
-----------------------	-----------

UniProt ID	P63016
-------------------	--------

 Tel: 1-631-559-9269 1-516-512-3133

 Email: info@creative-biomart.com  Fax: 1-631-938-8127

 45-1 Ramsey Road, Shirley, NY 11967, USA



Tel: 1-631-559-9269 1-516-512-3133

Email: info@creative-biomart.com Fax: 1-631-938-8127

45-1 Ramsey Road, Shirley, NY 11967, USA