

Recombinant Mouse Pdcd1 Protein (Leu25-Gln167), C-Fc tagged

Cat. No. Pdcd1-5725M Lot. No. (See product label)

SPECIFICATION

Product Overview	Recombinant mouse PDCD1 (Leu25-Gln167) fused with the C-terminal Fc tag was expressed in mammalian cells.
Species	Mouse
Source	Mammalian Cells
ProteinLength	Leu25-Gln167
Form	Lyophilized powder/frozen liquid
Molecular Mass	40.73 kDa
Purity	> 90 % as determined by SDS-PAGE
Notes	For research use only.
Storage	Use a manual defrost freezer and avoid repeated freeze thaw cycles. Store at 2 to 8 centigrade for one week. Store at -20 to -80 centigrade for twelve months from the date of receipt.
Storage Buffer	Supplied as solution form in PBS or lyophilized from PBS.
Reconstitution	Reconstitute in sterile water for a stock solution.

 Tel: 1-631-559-9269 1-516-512-3133

 Email: info@creative-biomart.com  Fax: 1-631-938-8127

 45-1 Ramsey Road, Shirley, NY 11967, USA

Shipping

They are shipped out with dry ice/blue ice unless customers require otherwise.

GENE INFORMATION
Gene Name

[Pdc1 programmed cell death 1 \[Mus musculus \(house mouse\) \]](#)

Official Symbol

[Pdc1](#)

Synonyms

PDCD1; programmed cell death 1; programmed cell death protein 1; mPD-1; protein PD-1; PD-1; Pdc1; Ly101;

Gene ID

[18566](#)

mRNA Refseq

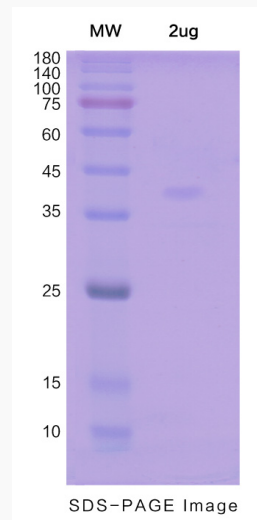
[NM_008798](#)

Protein Refseq

[NP_032824](#)

UniProt ID

[Q02242](#)

SDS-PAGE


 Tel: 1-631-559-9269 1-516-512-3133

 Email: info@creative-biomart.com  Fax: 1-631-938-8127

 45-1 Ramsey Road, Shirley, NY 11967, USA