

Recombinant Mouse Pdcd1 Protein (Leu25-Gln167), C-His tagged

Cat. No. Pdcd1-6766M Lot. No. (See product label)

SPECIFICATION

Product Overview	Recombinant mouse PDCD1 (Leu25-Gln167) fused with the C-terminal His tag was expressed in mammalian cells.
Species	Mouse
Source	Mammalian Cells
ProteinLength	Leu25-Gln167
Description	Involved in negative regulation of immune response. Acts upstream of or within negative regulation of apoptotic process; negative regulation of tolerance induction; and positive regulation of apoptotic process. Located in external side of plasma membrane. Is expressed in retina. Used to study dilated cardiomyopathy and systemic lupus erythematosus. Human ortholog (s) of this gene implicated in autoimmune disease (multiple); hepatitis B; hepatitis C; hepatocellular carcinoma; and lupus nephritis. Orthologous to human PDCD1 (programmed cell death 1).
Form	Lyophilized powder/frozen liquid
Molecular Mass	15.73 kDa
Purity	> 90 % as determined by SDS-PAGE
Notes	For research use only.

 Tel: 1-631-559-9269 1-516-512-3133

 Email: info@creative-biomart.com  Fax: 1-631-938-8127

 45-1 Ramsey Road, Shirley, NY 11967, USA

Storage	Use a manual defrost freezer and avoid repeated freeze thaw cycles. Store at 2 to 8 centigrade for one week. Store at -20 to -80 centigrade for twelve months from the date of receipt.
Storage Buffer	Supplied as solution form in PBS or lyophilized from PBS.
Reconstitution	Reconstitute in sterile water for a stock solution.
Shipping	They are shipped out with dry ice/blue ice unless customers require otherwise.

GENE INFORMATION

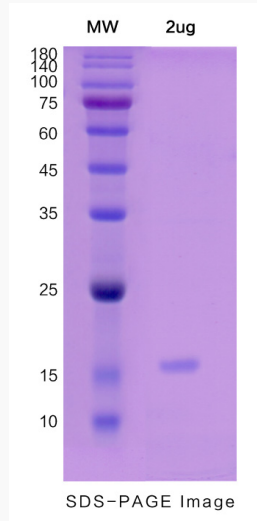
Gene Name	Pdcd1 programmed cell death 1 [Mus musculus (house mouse)]
Official Symbol	Pdcd1
Synonyms	PDCD1; programmed cell death 1; programmed cell death protein 1; mPD-1; protein PD-1; PD-1; Pdc1; Ly101;
Gene ID	18566
mRNA Refseq	NM_008798
Protein Refseq	NP_032824
UniProt ID	Q02242

 Tel: 1-631-559-9269 1-516-512-3133

 Email: info@creative-biomart.com  Fax: 1-631-938-8127

 45-1 Ramsey Road, Shirley, NY 11967, USA

SDS-PAGE



 Tel: 1-631-559-9269 1-516-512-3133

 Email: info@creative-biomart.com  Fax: 1-631-938-8127

 45-1 Ramsey Road, Shirley, NY 11967, USA