

Active Recombinant Rat Pde7a protein, GST-tagged

Cat. No. Pde7a-1543R Lot. No. (See product label)

SPECIFICATION

Product Overview	Recombinant Rat Pde7a(147–482 aa) fused with GST tag at N-terminal was expressed in Insect cells.
Species	Rat
Source	Insect Cells
ProteinLength	147-482 a.a.
Form	45 mM Tris-HCl, pH 8.0, 124 mM NaCl, 2.4 mM KCl, 18 mM glutathione, 10% glycerol, and 3 mM DTT.
Bio-activity	≥354 pmol/min/μg.
Molecular Mass	65 kDa
Unit Definition	One unit is defined as the amount of enzyme that will convert 1 pmole of 3', 5'-cAMP to 5'-AMP per minute at 37 centigrade.
Applications	Useful for the study of enzyme kinetics, screening inhibitors, and selectivity profiling.
Storage	>6 months at -80 centigrade. Avoid freeze/thaw cycles.
Concentration	0.34 mg/ml

 Tel: 1-631-559-9269 1-516-512-3133

 Email: info@creative-biomart.com  Fax: 1-631-938-8127

 45-1 Ramsey Road, Shirley, NY 11967, USA

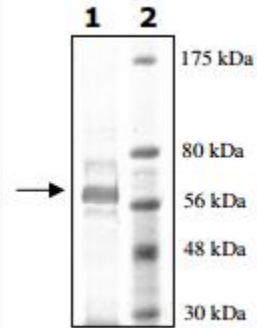
GENE INFORMATION

Gene Name	Pde7a phosphodiesterase 7A [<i>Rattus norvegicus</i>]
Official Symbol	Pde7a
Synonyms	PDE7A; phosphodiesterase 7A; high affinity cAMP-specific 3,5-cyclic phosphodiesterase 7A; rolipram-insensitive phosphodiesterase type 7; PDE7-1;
Gene ID	81744
mRNA Refseq	NM_031080
Protein Refseq	NP_112342
Chromosome Location	2q24
Pathway	G Protein Signaling Pathways, organism-specific biosystem; G alpha (s) signalling events, organism-specific biosystem; GPCR downstream signaling, organism-specific biosystem; Morphine addiction, organism-specific biosystem; Morphine addiction, conserved biosystem; Purine metabolism, organism-specific biosystem; Purine metabolism, conserved biosystem;
Function	3,5-cyclic-AMP phosphodiesterase activity; 3,5-cyclic-AMP phosphodiesterase activity; 3,5-cyclic-AMP phosphodiesterase activity; cyclic-nucleotide phosphodiesterase activity; hydrolase activity; metal ion binding; phosphoric diester hydrolase activity;

 Tel: 1-631-559-9269 1-516-512-3133

 Email: info@creative-biomart.com  Fax: 1-631-938-8127

 45-1 Ramsey Road, Shirley, NY 11967, USA



 Tel: 1-631-559-9269 1-516-512-3133

 Email: info@creative-biomart.com  Fax: 1-631-938-8127

 45-1 Ramsey Road, Shirley, NY 11967, USA