

## Recombinant Rat Pdgfa Protein, His-tagged

**Cat. No.** Pdgfa-1930R    **Lot. No.** (See product label)

### SPECIFICATION

<b>Product Overview</b>	Recombinant Rat Pdgfa Protein (Glu90-Glu190) with N-His tag was expressed in E. coli.
<b>Species</b>	Rat
<b>Source</b>	E.coli
<b>ProteinLength</b>	Glu90-Glu190
<b>Description</b>	<p>Predicted to enable several functions, including platelet-derived growth factor binding activity; protein dimerization activity; and signaling receptor binding activity. Involved in several processes, including male gonad development; response to estradiol; and response to retinoic acid. Predicted to be located in cell surface and microvillus. Predicted to be active in extracellular space. Biomarker of chronic ulcer of skin; oligohydramnios; pancreatitis; pulmonary hypertension; and renovascular hypertension. Human ortholog(s) of this gene implicated in high grade glioma. Orthologous to human PDGFA (platelet derived growth factor subunit A).</p>
<b>Form</b>	Freeze-dried powder
<b>Molecular Mass</b>	<p>Predicted Molecular Mass: 15.2 kDa            Accurate Molecular Mass: 15 kDa</p>
<b>Purity</b>	> 97%

 Tel: 1-631-559-9269    1-516-512-3133

 Email: [info@creative-biomart.com](mailto:info@creative-biomart.com)     Fax: 1-631-938-8127

 45-1 Ramsey Road, Shirley, NY 11967, USA

<b>Applications</b>	Positive Control; Immunogen; SDS-PAGE; WB.
<b>Stability</b>	The thermal stability is described by the loss rate. The loss rate was determined by accelerated thermal degradation test, that is, incubate the protein at 37 centigrade for 48h, and no obvious degradation and precipitation were observed. The loss rate is less than 5% within the expiration date under appropriate storage condition.
<b>Storage</b>	Avoid repeated freeze/thaw cycles. Store at 2-8 centigrade for one month. Aliquot and store at -80 centigrade for 12 months.
<b>Storage Buffer</b>	20mM Tris, 150mM NaCl, pH8.0, containing 1mM EDTA, 1mM DTT, 0.01% SKL, 5% Trehalose and Proclin300.
<b>Reconstitution</b>	Reconstitute in 20mM Tris, 150mM NaCl (pH8.0) to a concentration of 0.1-1.0 mg/mL. Do not vortex.

## GENE INFORMATION

<b>Gene Name</b>	<a href="#">Pdgfa platelet-derived growth factor alpha polypeptide [ Rattus norvegicus (Norway rat) ]</a>
<b>Official Symbol</b>	<a href="#">Pdgfa</a>
<b>Synonyms</b>	PDGFA; platelet-derived growth factor alpha polypeptide; platelet-derived growth factor subunit A; PDGF-1; PDGF subunit A; platelet derived growth factor, alpha; Platelet-derived growth factor A chain; PDGFACP;
<b>Gene ID</b>	<a href="#">25266</a>
<b>mRNA Refseq</b>	<a href="#">NM_012801</a>

 Tel: 1-631-559-9269 1-516-512-3133

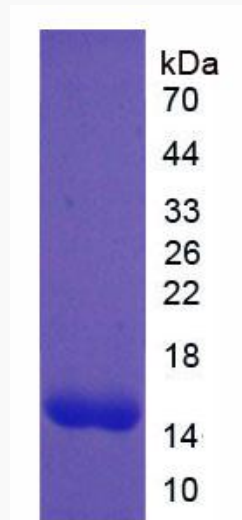
 Email: [info@creative-biomart.com](mailto:info@creative-biomart.com)  Fax: 1-631-938-8127

 45-1 Ramsey Road, Shirley, NY 11967, USA



Protein Refseq NP\_036933

UniProt ID P28576



Tel: 1-631-559-9269 1-516-512-3133

Email: [info@creative-biomart.com](mailto:info@creative-biomart.com) Fax: 1-631-938-8127

45-1 Ramsey Road, Shirley, NY 11967, USA