

## Recombinant Rat Pdgfb Protein, His&GST-tagged

**Cat. No.** Pdgfb-1931R    **Lot. No.** (See product label)

### SPECIFICATION

<b>Product Overview</b>	Recombinant Rat Pdgfb Protein (Cys13-Ala241) with N-His&GST tag was expressed in E. coli.
<b>Species</b>	Rat
<b>Source</b>	E.coli
<b>ProteinLength</b>	Cys13-Ala241
<b>Description</b>	Enables signaling receptor binding activity. Involved in several processes, including positive regulation of biosynthetic process; positive regulation of cell migration; and response to peptide hormone. Located in several cellular components, including basolateral plasma membrane; dendrite; and neuronal cell body. Used to study asthma; brain infarction; glomerulonephritis; and visual epilepsy. Biomarker of cholestasis; hypertension (multiple); liver cirrhosis; oligohydramnios; and ureteral obstruction. Human ortholog(s) of this gene implicated in basal ganglia calcification; clear cell renal cell carcinoma; connective tissue cancer (multiple); familial meningioma; and prostatic hypertrophy. Orthologous to human PDGFB (platelet derived growth factor subunit B).
<b>Form</b>	Freeze-dried powder
<b>Molecular Mass</b>	Predicted Molecular Mass: 56.0 kDa Accurate Molecular Mass: 56/39 kDa

 Tel: 1-631-559-9269    1-516-512-3133

 Email: [info@creative-biomart.com](mailto:info@creative-biomart.com)     Fax: 1-631-938-8127

 45-1 Ramsey Road, Shirley, NY 11967, USA

<b>Purity</b>	> 90%
<b>Applications</b>	Positive Control; Immunogen; SDS-PAGE; WB.
<b>Stability</b>	The thermal stability is described by the loss rate. The loss rate was determined by accelerated thermal degradation test, that is, incubate the protein at 37 centigrade for 48h, and no obvious degradation and precipitation were observed. The loss rate is less than 5% within the expiration date under appropriate storage condition.
<b>Storage</b>	Avoid repeated freeze/thaw cycles. Store at 2-8 centigrade for one month. Aliquot and store at -80 centigrade for 12 months.
<b>Storage Buffer</b>	100mM NaHCO <sub>3</sub> , 500mM NaCl, pH8.3, containing 1mM EDTA, 1mM DTT, 0.01% SKL, 5% Trehalose and Proclin300.
<b>Reconstitution</b>	Reconstitute in ddH <sub>2</sub> O to a concentration of 0.1-1.0 mg/mL. Do not vortex.

## GENE INFORMATION

<b>Gene Name</b>	<a href="#">Pdgfb platelet-derived growth factor beta polypeptide [ Rattus norvegicus (Norway rat) ]</a>
<b>Official Symbol</b>	<a href="#">Pdgfb</a>
<b>Synonyms</b>	PDGFB; platelet-derived growth factor beta polypeptide; platelet-derived growth factor subunit B; PDGF-2; pdgf protein; PDGF subunit B; platelet-derived growth factor B chain; platelet derived growth factor, B polypeptide; Platelet-derived growth factor, same as Sis (Simian sarcoma viral oncogene homologue, c-sis); platelet-derived growth factor beta polypeptide (simian sarcoma viral (v-sis) oncogene homolog); SIS; c-sis;

 Tel: 1-631-559-9269 1-516-512-3133

 Email: [info@creative-biomart.com](mailto:info@creative-biomart.com)  Fax: 1-631-938-8127

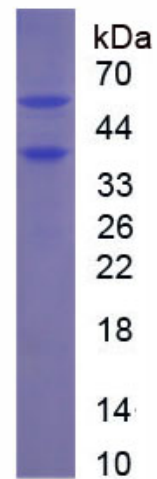
 45-1 Ramsey Road, Shirley, NY 11967, USA

Gene ID 24628

mRNA Refseq NM\_031524

Protein Refseq NP\_113712

UniProt ID Q05028



Tel: 1-631-559-9269 1-516-512-3133

Email: [info@creative-biomart.com](mailto:info@creative-biomart.com) Fax: 1-631-938-8127

45-1 Ramsey Road, Shirley, NY 11967, USA