

Recombinant Rat Pdgfb protein, His & GST-tagged

Cat. No. Pdgfb-639R **Lot. No.** (See product label)

SPECIFICATION

Product Overview	Recombinant Rat Pdgfb aa. (Cys5~Lys225 (Accession # Q05028)) fused with N-terminal His & GST tag was produced in E. coli cells.
Species	Rat
Source	E.coli
ProteinLength	Cys5~Lys225
Description	May play a role in carotid artery smooth muscle cell proliferation and neointimal formation in response to balloon catheter injury.
Form	Freeze-dried powder
Molecular Mass	Predicted Molecular Mass: 57.1kDa
Endotoxin	<1.0EU per 1g (determined by the LAL method)
Purity	>95%
Characteristic	The isoelectric point is 8.7.
Applications	SDS-PAGE; WB; ELISA; IP
Stability	The thermal stability is described by the loss rate. The loss rate was determined by

 Tel: 1-631-559-9269 1-516-512-3133

 Email: info@creative-biomart.com  Fax: 1-631-938-8127

 45-1 Ramsey Road, Shirley, NY 11967, USA

accelerated thermal degradation test, that is, incubate the protein at 37°C for 48h, and no obvious degradation and precipitation were observed. The loss rate is less than 5% within the expiration date under appropriate storage condition.

Storage

Avoid repeated freeze/thaw cycles. Store at 2-8°C for one month. Aliquot and store at -80°C for 12 months.

Storage buffer

Supplied as lyophilized form in PBS, pH7.4, containing 5% sucrose, 0.01% sarcosyl.

Reconstitution

Reconstitute in sterile PBS, pH7.2-pH7.4.

GENE INFORMATION

Gene Name

[Pdgfb platelet derived growth factor subunit B \[Rattus norvegicus \(Norway rat\) \]](#)

Official Symbol

[Pdgfb](#)

Synonyms

Pdgfb; platelet derived growth factor subunit B; SIS; c-sis; platelet-derived growth factor subunit B; PDGF subunit B; PDGF-2; Platelet-derived growth factor, same as Sis (Simian sarcoma viral oncogene homologue, c-sis); pdgf protein; platelet derived growth factor, B polypeptide; platelet-derived growth factor B chain; platelet-derived growth factor beta polypeptide (simian sarcoma viral (v-sis) oncogene homolog)

Gene ID

[24628](#)

mRNA Refseq

[NM_031524.1](#)

Protein Refseq

[NP_113712.1](#)

UniProt ID

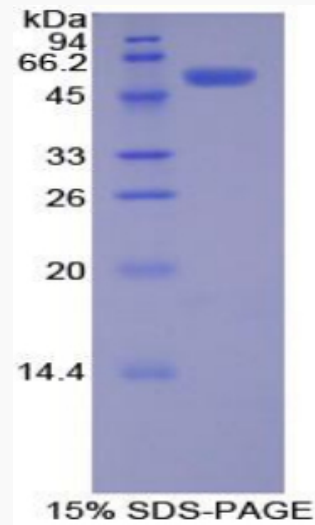
[Q05028](#)

 Tel: 1-631-559-9269 1-516-512-3133

 Email: info@creative-biomart.com  Fax: 1-631-938-8127

 45-1 Ramsey Road, Shirley, NY 11967, USA

SDS-PAGE



 Tel: 1-631-559-9269 1-516-512-3133

 Email: info@creative-biomart.com  Fax: 1-631-938-8127

 45-1 Ramsey Road, Shirley, NY 11967, USA