

Recombinant Mouse Pdgfrb Protein, His-tagged

Cat. No. Pdgfrb-189M Lot. No. (See product label)

SPECIFICATION

Product Overview	Recombinant Mouse Pdgfrb(Val337~Pro583) fused with His tag at N-terminal was expressed in E. coli.
Species	Mouse
Source	E.coli
ProteinLength	Val337~Pro583
Form	20mM Tris, 150mM NaCl, pH8.0, containing 1mM EDTA, 1mM DTT, 0.01% SKL, 5% Trehalose and Proclin300.
Molecular Mass	32.0kDa
Endotoxin	<1.0EU per 1ug (determined by the LAL method)
Purity	> 97%
Applications	Positive Control; Immunogen; SDS-PAGE; WB. If bio-activity of the protein is needed, please check active protein
Stability	The thermal stability is described by the loss rate. The loss rate was determined by accelerated thermal degradation test, that is, incubate the protein at 37 centigrade for 48h, and no obvious degradation and precipitation were observed. The loss rate is less than 5% within the expiration date under appropriate storage condition.

 Tel: 1-631-559-9269 1-516-512-3133

 Email: info@creative-biomart.com  Fax: 1-631-938-8127

 45-1 Ramsey Road, Shirley, NY 11967, USA

Storage Avoid repeated freeze/thaw cycles. Store at 2-8 centigrade for one month. Aliquot and store at -80 centigrade for 12 months.

Reconstitution Reconstitute in 20mM Tris, 150mM NaCl (pH8.0) to a concentration of 0.1-1.0 mg/mL. Do not vortex.

GENE INFORMATION

Gene Name [Pdgfrb platelet derived growth factor receptor, beta polypeptide \[Mus musculus \]](#)

Official Symbol [Pdgfrb](#)

Synonyms PDGFRB; platelet derived growth factor receptor, beta polypeptide; platelet-derived growth factor receptor beta; PDGFR-beta; PDGF-R-beta; PDGF beta chain; CD140 antigen-like family member B; platelet-derived growth factor receptor 1; beta platelet-derived growth factor receptor; beta-type platelet-derived growth factor receptor; platelet-derived growth factor receptor beta variant 1; Pdgfr; CD140b; PDGFR-1; AI528809;

Gene ID [18596](#)

mRNA Refseq [NM_001146268](#)

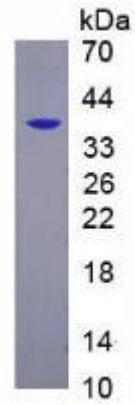
Protein Refseq [NP_001139740](#)

UniProt ID [P05622](#)

 Tel: 1-631-559-9269 1-516-512-3133

 Email: info@creative-biomart.com  Fax: 1-631-938-8127

 45-1 Ramsey Road, Shirley, NY 11967, USA



 Tel: 1-631-559-9269 1-516-512-3133

 Email: info@creative-biomart.com  Fax: 1-631-938-8127

 45-1 Ramsey Road, Shirley, NY 11967, USA