

## Recombinant Mouse Pdhb protein, His-tagged

**Cat. No.** Pdhb-1976M    **Lot. No.** (See product label)

### SPECIFICATION

<b>Product Overview</b>	Recombinant Mouse Pdhb aa. (Gly65~Lys336 ((Accession # Q9D051)) fused with N-terminal His tag was produced in E. coli cells.
<b>Species</b>	Mouse
<b>Source</b>	E.coli
<b>ProteinLength</b>	Gly65~Lys336
<b>Form</b>	Freeze-dried powder
<b>Molecular Mass</b>	Predicted Molecular Mass: 30.5kDa
<b>Endotoxin</b>	<1.0EU per 1ug (determined by the LAL method)
<b>Purity</b>	> 95%
<b>Characteristic</b>	The isoelectric point is 6.7.
<b>Applications</b>	SDS-PAGE; WB; ELISA; IP.
<b>Stability</b>	The thermal stability is described by the loss rate of the target protein. The loss rate was determined by accelerated thermal degradation test, that is, incubate the protein at 37°C for 48h, and no obvious degradation and precipitation were observed. (Referring from China Biological Products Standard, which was calculated by the

 Tel: 1-631-559-9269    1-516-512-3133

 Email: [info@creative-biomart.com](mailto:info@creative-biomart.com)     Fax: 1-631-938-8127

 45-1 Ramsey Road, Shirley, NY 11967, USA

Arrhenius equation.) The loss of this protein is less than 5% within the expiration date under appropriate storage condition.

**Storage**

Avoid repeated freeze/thaw cycles. Store at 2-8°C for one month. Aliquot and store at -80°C for 12 months.

**Storage Buffer**

Supplied as liquid form in Phosphate buffered saline(PBS), pH 7.4.

**Reconstitution**

Reconstitute in sterile PBS, pH7.2-pH7.4.

## GENE INFORMATION

**Gene Name**

[Pdhb pyruvate dehydrogenase \(lipoamide\) beta \[ Mus musculus \(house mouse\) \]](#)

**Official Symbol**

[Pdhb](#)

**Synonyms**

CYP11A1; CYP11A; CYPXIA1; P450(scc); cholesterol side-chain cleavage enzyme, mitochondrial; cholesterol desmolase; cytochrome P450 11A1; cytochrome P450(scc)

**Gene ID**

[68263](#)

**mRNA Refseq**

[NM\\_024221.3](#)

**Protein Refseq**

[NP\\_077183.1](#)

**UniProt ID**

[Q9D051](#)

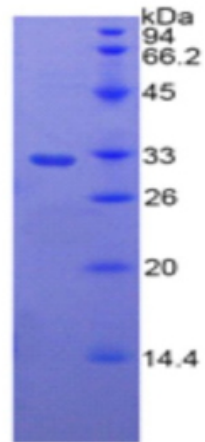
 Tel: 1-631-559-9269 1-516-512-3133

 Email: [info@creative-biomart.com](mailto:info@creative-biomart.com)  Fax: 1-631-938-8127

 45-1 Ramsey Road, Shirley, NY 11967, USA



**Mouse PDHb**



15% SDS-PAGE

SDS-PAGE

Tel: 1-631-559-9269 1-516-512-3133

Email: [info@creative-biomart.com](mailto:info@creative-biomart.com) Fax: 1-631-938-8127

45-1 Ramsey Road, Shirley, NY 11967, USA