

Recombinant Mouse Pdpn protein, His & GST-tagged

Cat. No. Pdpn-8027M Lot. No. (See product label)

SPECIFICATION

| | |
|-------------------------|---|
| Product Overview | Recombinant Mouse Pdpn aa. (Gly23~Val138 (Accession # Q62011)) fused with N-terminal His & GST tag was produced in E. coli cells. |
| Species | Mouse |
| Source | E.coli |
| ProteinLength | Gly23~Val138 |
| Form | Freeze-dried powder |
| Molecular Mass | 47kDa as determined by SDS-PAGE reducing conditions. |
| Endotoxin | <1.0EU per 1ug (determined by the LAL method) |
| Purity | >90% |
| Characteristic | The isoelectric point is 5.0. |
| Applications | SDS-PAGE; WB; ELISA; IP |
| Stability | The thermal stability is described by the loss rate of the target protein. The loss rate was determined by accelerated thermal degradation test, that is, incubate the protein at 37°C for 48h, and no obvious degradation and precipitation were observed. (Referring from China Biological Products Standard, which was calculated by the |

 Tel: 1-631-559-9269 1-516-512-3133

 Email: info@creative-biomart.com  Fax: 1-631-938-8127

 45-1 Ramsey Road, Shirley, NY 11967, USA

Arrhenius equation.) The loss of this protein is less than 5% within the expiration date under appropriate storage condition.

Storage

Avoid repeated freeze/thaw cycles. Store at 2-8°C for one month. Aliquot and store at -80°C for 12 months.

Storage Buffer

Supplied as lyophilized form in PBS, pH7.4, containing 5% trehalose, 0.01% sarcosyl.

Reconstitution

Reconstitute in sterile PBS, pH7.2-pH7.4.

GENE INFORMATION

Gene Name

[Pdpn podoplanin \[Mus musculus \(house mouse\) \]](#)

Official Symbol

[Pdpn](#)

Synonyms

T1a; Gp38; OTS-8; T1alpha; RANDAM-2; T1-alpha; PA2.26 antigen; aggrus; glycoprotein 38; transmembrane glycoprotein E11; podoplanin

Gene ID

[14726](#)

mRNA Refseq

[NM_001290822.1](#)

Protein Refseq

[NP_001277751.1](#)

UniProt ID

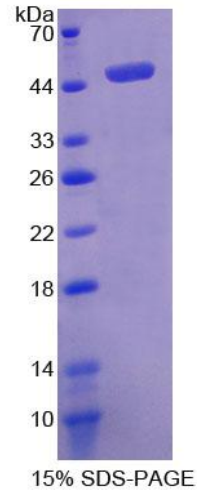
[Q62011](#)

 Tel: 1-631-559-9269 1-516-512-3133

 Email: info@creative-biomart.com  Fax: 1-631-938-8127

 45-1 Ramsey Road, Shirley, NY 11967, USA

SDS-PAGE



 Tel: 1-631-559-9269 1-516-512-3133

 Email: info@creative-biomart.com  Fax: 1-631-938-8127

 45-1 Ramsey Road, Shirley, NY 11967, USA