

Recombinant Mouse Pdx1 protein, His & GST-tagged

Cat. No. Pdx1-1573M **Lot. No.** (See product label)

SPECIFICATION

Product Overview	Recombinant Mouse Pdx1 aa. (Met1~Arg284 (Accession # P52946)) fused with N-terminal His & GST tag was produced in E. coli cells.
Species	Mouse
Source	E.coli
ProteinLength	Met1~Arg284
Form	Freeze-dried powder
Molecular Mass	Predicted Molecular Mass: 61.0kDa
Endotoxin	<1.0EU per 1ug (determined by the LAL method)
Purity	>90%
Applications	SDS-PAGE; WB; ELISA; IP.
Stability	The thermal stability is described by the loss rate. The loss rate was determined by accelerated thermal degradation test, that is, incubate the protein at 37°C for 48h, and no obvious degradation and precipitation were observed. The loss rate is less than 5% within the expiration date under appropriate storage condition.
Storage	Avoid repeated freeze/thaw cycles. Store at 2-8°C for one month. Aliquot and store at

 Tel: 1-631-559-9269 1-516-512-3133

 Email: info@creative-biomart.com  Fax: 1-631-938-8127

 45-1 Ramsey Road, Shirley, NY 11967, USA

-80°C for 12 months.

Storage buffer

Supplied as lyophilized form in 20mM Tris, 150mM NaCl, pH8.0, containing 1mM EDTA, 1mM DTT, 0.01% sarcosyl, 5% trehalose, and preservative.

Reconstitution

Reconstitute in sterile ddH₂O.

Isoelectric Point

6.4

GENE INFORMATION

Gene Name

[Pdx1 pancreatic and duodenal homeobox 1 \[Mus musculus \(house mouse\) \]](#)

Official Symbol

[Pdx1](#)

Synonyms

Pdx1; pancreatic and duodenal homeobox 1; Ipf1; IDX-1; IPF-1; Mody4; STF-1; pdx-1; pancreas/duodenum homeobox protein 1; insulin promoter factor 1, homeodomain transcription factor; islet/duodenum homeobox 1; pancreatic and duodenal homeobox gene 1; somatostatin-transactivating factor 1

Gene ID

[18609](#)

mRNA Refseq

[NM_008814.3](#)

Protein Refseq

[NP_032840.1](#)

UniProt ID

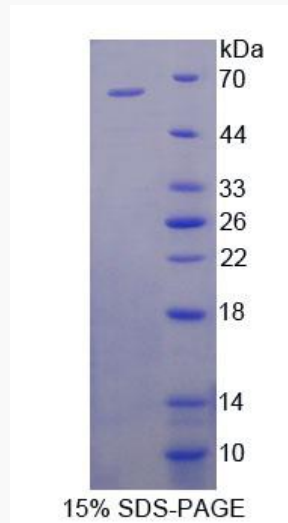
[P52946](#)

 Tel: 1-631-559-9269 1-516-512-3133

 Email: info@creative-biomart.com  Fax: 1-631-938-8127

 45-1 Ramsey Road, Shirley, NY 11967, USA

SDS-PAGE



 Tel: 1-631-559-9269 1-516-512-3133

 Email: info@creative-biomart.com  Fax: 1-631-938-8127

 45-1 Ramsey Road, Shirley, NY 11967, USA