

## Recombinant Rat Pdx1 Protein, His&GST-tagged

**Cat. No.** Pdx1-2749R    **Lot. No.** (See product label)

### SPECIFICATION

<b>Product Overview</b>	Recombinant Rat Pdx1 Protein (Met1-Arg283) with N-His&GST tag was expressed in E. coli.
<b>Species</b>	Rat
<b>Source</b>	E.coli
<b>ProteinLength</b>	Met1-Arg283
<b>Description</b>	Enables DNA-binding transcription factor activity; promoter-specific chromatin binding activity; and sequence-specific DNA binding activity. Contributes to DNA-binding transcription factor activity, RNA polymerase II-specific. Involved in several processes, including animal organ development; detection of glucose; and regulation of transcription, DNA-templated. Located in nucleus. Colocalizes with cytoplasm. Biomarker of acute necrotizing pancreatitis; hyperglycemia; placental insufficiency; and type 2 diabetes mellitus. Human ortholog(s) of this gene implicated in cerebral infarction; hyperglycemia; maturity-onset diabetes of the young type 4; pancreatic agenesis; and type 2 diabetes mellitus. Orthologous to human PDX1 (pancreatic and duodenal homeobox 1).
<b>Form</b>	Freeze-dried powder
<b>Molecular Mass</b>	Predicted Molecular Mass: 60.8 kDa Accurate Molecular Mass: 62 kDa

 Tel: 1-631-559-9269    1-516-512-3133

 Email: [info@creative-biomart.com](mailto:info@creative-biomart.com)     Fax: 1-631-938-8127

 45-1 Ramsey Road, Shirley, NY 11967, USA

<b>Purity</b>	> 95%
<b>Applications</b>	Positive Control; Immunogen; SDS-PAGE; WB.
<b>Stability</b>	The thermal stability is described by the loss rate. The loss rate was determined by accelerated thermal degradation test, that is, incubate the protein at 37 centigrade for 48h, and no obvious degradation and precipitation were observed. The loss rate is less than 5% within the expiration date under appropriate storage condition.
<b>Storage</b>	Avoid repeated freeze/thaw cycles. Store at 2-8 centigrade for one month. Aliquot and store at -80 centigrade for 12 months.
<b>Storage Buffer</b>	20mM Tris, 150mM NaCl, pH8.0, containing 1mM EDTA, 1mM DTT, 0.01% SKL, 5% Trehalose and Proclin300.
<b>Reconstitution</b>	Reconstitute in 20mM Tris, 150mM NaCl (pH8.0) to a concentration of 0.1-1.0 mg/mL. Do not vortex.

## GENE INFORMATION

<b>Gene Name</b>	Pdx1 pancreatic and duodenal homeobox 1 [ <i>Rattus norvegicus</i> (Norway rat) ]
<b>Official Symbol</b>	Pdx1
<b>Synonyms</b>	Pdx1; pancreatic and duodenal homeobox 1; ldx1; lpf1; Stf1; pancreas/duodenum homeobox protein 1; IDX-1; IPF-1; Insulin promoter factor 1; STF-1; insulin promotor factor 1; islet/duodenum homeobox-1; pancreatic and duodenal homeobox gene 1; somatostatin transactivating factor 1
<b>Gene ID</b>	29535

 Tel: 1-631-559-9269 1-516-512-3133

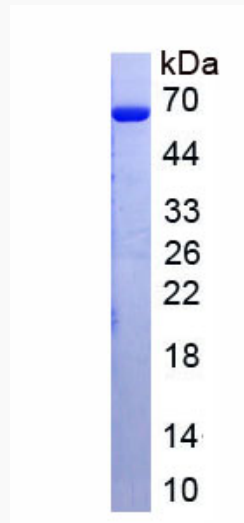
 Email: [info@creative-biomart.com](mailto:info@creative-biomart.com)  Fax: 1-631-938-8127

 45-1 Ramsey Road, Shirley, NY 11967, USA

mRNA Refseq [NM\\_022852](#)

Protein Refseq [NP\\_074043](#)

UniProt ID [P52947](#)



 Tel: 1-631-559-9269 1-516-512-3133

 Email: [info@creative-biomart.com](mailto:info@creative-biomart.com)  Fax: 1-631-938-8127

 45-1 Ramsey Road, Shirley, NY 11967, USA