

## Recombinant Rat Pecam1 Protein, His-tagged

**Cat. No.** Pecam1-1179R    **Lot. No.** (See product label)

### SPECIFICATION

<b>Product Overview</b>	Recombinant Rat Pecam1 Protein (Gln18-Lys589) with His tag was expressed in 293F.
<b>Species</b>	Rat
<b>Source</b>	HEK293
<b>ProteinLength</b>	Gln18-Lys589
<b>Description</b>	Enables protein phosphatase binding activity. Involved in several processes, including cellular response to interferon-gamma; negative regulation of GTPase activity; and negative regulation of actin filament polymerization. Located in cell surface and ruffle. Used to study pulmonary hypertension. Biomarker of bacterial pneumonia; orchitis; and osteoarthritis. Human ortholog(s) of this gene implicated in coronary artery disease (multiple); lung non-small cell carcinoma; neuroblastoma; and psoriatic arthritis. Orthologous to human PECAM1 (platelet and endothelial cell adhesion molecule 1).
<b>Form</b>	Freeze-dried powder
<b>Molecular Mass</b>	Predicted Molecular Mass: 66.2 kDa; Accurate Molecular Mass: 120 kDa
<b>Purity</b>	> 90%
<b>Applications</b>	Positive Control; Immunogen; SDS-PAGE; WB.

 Tel: 1-631-559-9269    1-516-512-3133

 Email: [info@creative-biomart.com](mailto:info@creative-biomart.com)     Fax: 1-631-938-8127

 45-1 Ramsey Road, Shirley, NY 11967, USA

<b>Stability</b>	The thermal stability is described by the loss rate. The loss rate was determined by accelerated thermal degradation test, that is, incubate the protein at 37 centigrade for 48h, and no obvious degradation and precipitation were observed. The loss rate is less than 5% within the expiration date under appropriate storage condition.
<b>Storage</b>	Avoid repeated freeze/thaw cycles. Store at 2-8 centigrade for one month. Aliquot and store at -80 centigrade for 12 months.
<b>Storage Buffer</b>	20mM Tris, 150mM NaCl, pH8.0, containing 1mM EDTA, 1mM DTT, 0.01% SKL, 5% Trehalose and Proclin300.
<b>Reconstitution</b>	Reconstitute in ddH <sub>2</sub> O to a concentration of 0.1-1.0 mg/mL. Do not vortex.

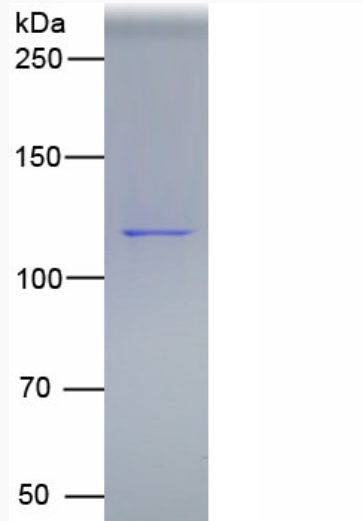
## GENE INFORMATION

<b>Gene Name</b>	<a href="#">Pecam1 platelet/endothelial cell adhesion molecule 1 [ Rattus norvegicus (Norway rat) ]</a>
<b>Official Symbol</b>	<a href="#">Pecam1</a>
<b>Synonyms</b>	PECAM1; platelet/endothelial cell adhesion molecule 1; platelet endothelial cell adhesion molecule; PECAM-1; CD31; Pecam; MGC124998;
<b>Gene ID</b>	<a href="#">29583</a>
<b>mRNA Refseq</b>	<a href="#">NM_031591</a>
<b>Protein Refseq</b>	<a href="#">NP_113779</a>
<b>UniProt ID</b>	<a href="#">Q3SWT0</a>

 Tel: 1-631-559-9269 1-516-512-3133

 Email: [info@creative-biomart.com](mailto:info@creative-biomart.com)  Fax: 1-631-938-8127

 45-1 Ramsey Road, Shirley, NY 11967, USA



Tel: 1-631-559-9269 1-516-512-3133

Email: [info@creative-biomart.com](mailto:info@creative-biomart.com) Fax: 1-631-938-8127

45-1 Ramsey Road, Shirley, NY 11967, USA