

Recombinant Plasmodium falciparum PfLDH protein, His-tagged

Cat. No. PfLDH-12P **Lot. No.** (See product label)

SPECIFICATION

Product Overview	Recombinant Plasmodium falciparum PfLDH(Met1-Ala316) fused with His tag at C-terminal was expressed in E. coli.
Species	Plasmodium falciparum
Source	E.coli
ProteinLength	1-316 a.a.
Predicted N Terminal	Met
Form	Lyophilized from sterile PBS, pH 7.4. Normally 5 % - 8 % trehalose, mannitol and 0.01% Tween80 are added as protectants before lyophilization.
Molecular Mass	The recombinant PfLDH consists 322 amino acids and predicts a molecular mass of 34.9 kDa.
Purity	> (28.0 + 67.9) % as determined by SDS-PAGE.
Stability	Samples are stable for up to twelve months from date of receipt at -70 centigrade
Storage	Store it under sterile conditions at -20 centigrade to -80 centigrade. It is recommended that the protein be aliquoted for optimal storage. Avoid repeated freeze-thaw cycles.

 Tel: 1-631-559-9269 1-516-512-3133

 Email: info@creative-biomart.com  Fax: 1-631-938-8127

 45-1 Ramsey Road, Shirley, NY 11967, USA

GENE INFORMATION

Gene Name PflDH L-lactate dehydrogenase [Plasmodium falciparum 3D7]

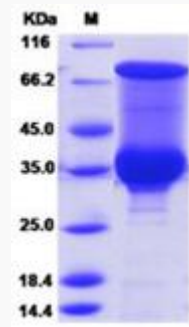
Official Symbol PflDH

Synonyms L-lactate dehydrogenase

Gene ID 814112

Chromosome Location chromosome: 13

Pathway Bifidobacterium shunt, organism-specific biosystem; Pyruvate metabolism, organism-specific biosystem; heterolactic fermentation, organism-specific biosystem; heterolactic fermentation, organism-specific biosystem



 Tel: 1-631-559-9269 1-516-512-3133

 Email: info@creative-biomart.com  Fax: 1-631-938-8127

 45-1 Ramsey Road, Shirley, NY 11967, USA