

Recombinant Mouse Pgf Protein (Val19-Pro158), C-His tagged

Cat. No. Pgf-6772M Lot. No. (See product label)

SPECIFICATION

Product Overview	Recombinant mouse PGF (Val19-Pro158) fused with the C-terminal His tag was expressed in mammalian cells.
Species	Mouse
Source	Mammalian Cells
ProteinLength	Val19-Pro158
Description	Predicted to enable identical protein binding activity; receptor ligand activity; and vascular endothelial growth factor receptor binding activity. Acts upstream of or within branching involved in ureteric bud morphogenesis and regulation of morphogenesis of a branching structure. Located in extracellular space. Is expressed in several structures, including brain; gut gland; musculature; reproductive system; and urinary system. Human ortholog (s) of this gene implicated in several diseases, including brain ischemia; diabetic neuropathy; glioblastoma; myocardial infarction; and pancreatic endocrine carcinoma. Orthologous to human PGF (placental growth factor).
Form	Lyophilized powder/frozen liquid
Molecular Mass	15.4 kDa
Purity	> 90 % as determined by SDS-PAGE

 Tel: 1-631-559-9269 1-516-512-3133

 Email: info@creative-biomart.com  Fax: 1-631-938-8127

 45-1 Ramsey Road, Shirley, NY 11967, USA

Notes	For research use only.
Storage	Use a manual defrost freezer and avoid repeated freeze thaw cycles. Store at 2 to 8 centigrade for one week. Store at -20 to -80 centigrade for twelve months from the date of receipt.
Storage Buffer	Supplied as solution form in PBS or lyophilized from PBS.
Reconstitution	Reconstitute in sterile water for a stock solution.
Shipping	They are shipped out with dry ice/blue ice unless customers require otherwise.

GENE INFORMATION

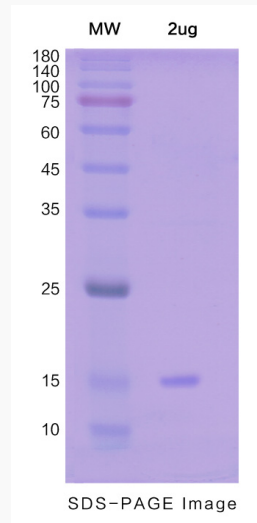
Gene Name	Pgf placental growth factor [<i>Mus musculus</i> (house mouse)]
Official Symbol	Pgf
Synonyms	Pgf; placental growth factor; PIGF; Plgf; placenta growth factor;
Gene ID	18654
mRNA Refseq	NM_008827
Protein Refseq	NP_032853
UniProt ID	P49764

 Tel: 1-631-559-9269 1-516-512-3133

 Email: info@creative-biomart.com  Fax: 1-631-938-8127

 45-1 Ramsey Road, Shirley, NY 11967, USA

SDS-PAGE



 Tel: 1-631-559-9269 1-516-512-3133

 Email: info@creative-biomart.com  Fax: 1-631-938-8127

 45-1 Ramsey Road, Shirley, NY 11967, USA