

## Recombinant Mouse Pglyrp1 protein, His-tagged

Cat. No. Pglyrp1-1072M Lot. No. (See product label)

### SPECIFICATION

<b>Product Overview</b>	Recombinant Mouse Pglyrp1 aa. (Phe19~Glu182 fused with N-terminal His tag was produced in E. coli cells.
<b>Species</b>	Mouse
<b>Source</b>	E.coli
<b>ProteinLength</b>	Phe19~Glu182
<b>Form</b>	Freeze-dried powder
<b>Molecular Mass</b>	20kDa as determined by SDS-PAGE reducing conditions.
<b>Endotoxin</b>	<1.0EU per 1g (determined by the LAL method)
<b>Purity</b>	>95%
<b>Characteristic</b>	The isoelectric point is 7.8.
<b>Applications</b>	SDS-PAGE; WB; ELISA; IP; CoIP; ReporterAssays; Purification; Amine Reactive Labeling.
<b>Stability</b>	The thermal stability is described by the loss rate. The loss rate was determined by accelerated thermal degradation test, that is, incubate the protein at 37°C for 48h, and no obvious degradation and precipitation were observed. The loss rate is less

 Tel: 1-631-559-9269 1-516-512-3133

 Email: [info@creative-biomart.com](mailto:info@creative-biomart.com)  Fax: 1-631-938-8127

 45-1 Ramsey Road, Shirley, NY 11967, USA

than 5% within the expiration date under appropriate storage condition.

**Storage**

Avoid repeated freeze/thaw cycles. Store at 2-8°C for one month. Aliquot and store at -80°C for 12 months.

**Concentration**

200µg/mL

**Storage buffer**

100mM NaHCO<sub>3</sub>, 500mM NaCl, pH8.3, containing 1mM EDTA, 1mM DTT, 0.01% sarcosyl, 5%Trehalose and Proclin300.

**Reconstitution**

Reconstitute in 100mM NaHCO<sub>3</sub>, 500mM NaCl (pH8.3) to a concentration of 0.1-1.0 mg/mL. Do not vortex.

## GENE INFORMATION

**Gene Name**

[Pglyrp1 peptidoglycan recognition protein 1 \[ Mus musculus \(house mouse\) \]](#)

**Official Symbol**

[Pglyrp1](#)

**Synonyms**

Pglyrp1; peptidoglycan recognition protein 1; PGRP; Tag7; Tasg7; PGRP-S; Pglyrp; Tnfsf3l; cytokine tag7

**Gene ID**

[21946](#)

**mRNA Refseq**

[NM\\_009402.2](#)

**Protein Refseq**

[NP\\_033428.1](#)

**UniProt ID**

[O88593](#)

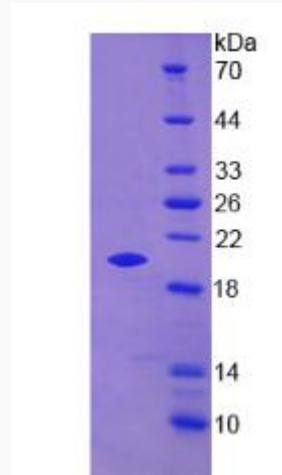
 Tel: 1-631-559-9269 1-516-512-3133

 Email: [info@creative-biomart.com](mailto:info@creative-biomart.com)  Fax: 1-631-938-8127

 45-1 Ramsey Road, Shirley, NY 11967, USA



SDS-PAGE



Tel: 1-631-559-9269 1-516-512-3133

Email: [info@creative-biomart.com](mailto:info@creative-biomart.com) Fax: 1-631-938-8127

45-1 Ramsey Road, Shirley, NY 11967, USA