

Recombinant Rat Pgp Protein, His-tagged

Cat. No. Pgp-1937R Lot. No. (See product label)

SPECIFICATION

Product Overview	Recombinant Rat Pgp Protein (Ala999-Ser1277) with N-His tag was expressed in E. coli.
Species	Rat
Source	E.coli
ProteinLength	Ala999-Ser1277
Description	Enables glycerol-3-phosphatase activity. Involved in glycerol biosynthetic process; glycerophospholipid metabolic process; and negative regulation of gluconeogenesis. Predicted to be located in cytosol. Predicted to be active in cytoplasm. Orthologous to human PGP (phosphoglycolate phosphatase).
Form	Freeze-dried powder
Molecular Mass	Predicted Molecular Mass: 33.8 kDa Accurate Molecular Mass: 34 kDa
Purity	> 90%
Applications	Positive Control; Immunogen; SDS-PAGE; WB.
Stability	The thermal stability is described by the loss rate. The loss rate was determined by accelerated thermal degradation test, that is, incubate the protein at 37 centigrade for

 Tel: 1-631-559-9269 1-516-512-3133

 Email: info@creative-biomart.com  Fax: 1-631-938-8127

 45-1 Ramsey Road, Shirley, NY 11967, USA

48h, and no obvious degradation and precipitation were observed. The loss rate is less than 5% within the expiration date under appropriate storage condition.

Storage

Avoid repeated freeze/thaw cycles. Store at 2-8 centigrade for one month. Aliquot and store at -80 centigrade for 12 months.

Storage Buffer

PBS, pH7.4, containing 0.01% SKL, 1mM DTT, 5% Trehalose and Proclin300.

Reconstitution

Reconstitute in 10mM PBS (pH7.4) to a concentration of 0.1-1.0 mg/mL. Do not vortex.

GENE INFORMATION

Gene Name

[Pgp phosphoglycolate phosphatase \[Rattus norvegicus \(Norway rat\) \]](#)

Official Symbol

[Pgp](#)

Synonyms

PGP; phosphoglycolate phosphatase; RGD1307773;

Gene ID

[287115](#)

mRNA Refseq

[NM_001169152](#)

Protein Refseq


[NP_001162623](#)

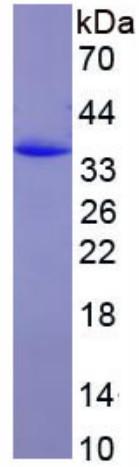
UniProt ID

[P43245](#)

 Tel: 1-631-559-9269 1-516-512-3133

 Email: info@creative-biomart.com  Fax: 1-631-938-8127

 45-1 Ramsey Road, Shirley, NY 11967, USA



 Tel: 1-631-559-9269 1-516-512-3133

 Email: info@creative-biomart.com  Fax: 1-631-938-8127

 45-1 Ramsey Road, Shirley, NY 11967, USA