

Recombinant Rat Pik3c2b protein, His & T7-tagged

Cat. No. Pik3c2b-1722R **Lot. No.** (See product label)

SPECIFICATION

Product Overview	Recombinant Rat Pik3c2b aa. (Ser790~Leu1025 (Accession # D3ZVF3)) fused with N-terminal His & T7 tag was produced in E. coli cells.
Species	Rat
Source	E.coli
ProteinLength	Ser790~Leu1025
Form	Freeze-dried powder
Molecular Mass	Predicted Molecular Mass: 31.5kDa
Endotoxin	<1.0EU per 1ug (determined by the LAL method)
Purity	>95%
Applications	SDS-PAGE; WB; ELISA; IP.
Stability	The thermal stability is described by the loss rate. The loss rate was determined by accelerated thermal degradation test, that is, incubate the protein at 37°C for 48h, and no obvious degradation and precipitation were observed. The loss rate is less than 5% within the expiration date under appropriate storage condition.
Storage	Avoid repeated freeze/thaw cycles. Store at 2-8°C for one month. Aliquot and store at

 Tel: 1-631-559-9269 1-516-512-3133

 Email: info@creative-biomart.com  Fax: 1-631-938-8127

 45-1 Ramsey Road, Shirley, NY 11967, USA

-80°C for 12 months.

Storage buffer Supplied as lyophilized form in PBS, pH7.4, containing 5% sucrose, 0.01% sarcosyl.

Reconstitution Reconstitute in sterile PBS, pH7.2-pH7.4.

Isoelectric Point 8.1

GENE INFORMATION

Gene Name [Pik3c2b phosphatidylinositol-4-phosphate 3-kinase, catalytic subunit type 2 beta \[Rattus norvegicus \(Norway rat\) \]](#)

Official Symbol [Pik3c2b](#)

Synonyms Pik3c2b; phosphatidylinositol-4-phosphate 3-kinase, catalytic subunit type 2 beta; phosphatidylinositol 4-phosphate 3-kinase C2 domain-containing subunit beta; nuclear cap binding protein subunit 2; phosphoinositide-3-kinase, class 2, beta polypeptide

Gene ID [289021](#)

mRNA Refseq [NM_001105951.1](#)

Protein Refseq [NP_001099421.1](#)

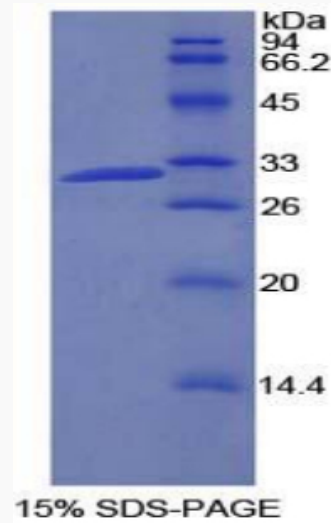
UniProt ID [D3ZVF3](#)

 Tel: 1-631-559-9269 1-516-512-3133

 Email: info@creative-biomart.com  Fax: 1-631-938-8127

 45-1 Ramsey Road, Shirley, NY 11967, USA

SDS-PAGE



 Tel: 1-631-559-9269 1-516-512-3133

 Email: info@creative-biomart.com  Fax: 1-631-938-8127

 45-1 Ramsey Road, Shirley, NY 11967, USA