

Recombinant Rat Pkm protein, His & T7-tagged

Cat. No. Pkm-2615R **Lot. No.** (See product label)

SPECIFICATION

Product Overview	Recombinant Rat Pkm aa. (Val324~Pro531 (Accession # P11980)) fused with N-terminal His & T7 tag was produced in E. coli cells.
Species	Rat
Source	E.coli
ProteinLength	Val324~Pro531
Description	M1 and M2 isozymes of pyruvate kinase; catalyzes the conversion of ATP and pyruvate to ADP and phosphoenolpyruvate in glycolysis.
Form	Freeze-dried powder
Molecular Mass	Predicted Molecular Mass: 26.4kDa
Endotoxin	<1.0EU per 1g (determined by the LAL method)
Purity	>95%
Characteristic	The isoelectric point is 9.
Applications	SDS-PAGE; WB; ELISA; IP
Stability	The thermal stability is described by the loss rate. The loss rate was determined by

 Tel: 1-631-559-9269 1-516-512-3133

 Email: info@creative-biomart.com  Fax: 1-631-938-8127

 45-1 Ramsey Road, Shirley, NY 11967, USA

accelerated thermal degradation test, that is, incubate the protein at 37°C for 48h, and no obvious degradation and precipitation were observed. The loss rate is less than 5% within the expiration date under appropriate storage condition.

Storage

Avoid repeated freeze/thaw cycles. Store at 2-8°C for one month. Aliquot and store at -80°C for 12 months.

Storage buffer

Supplied as lyophilized form in PBS, pH7.4, containing 5% trehalose, 0.01% sarcosyl.

Reconstitution

Reconstitute in sterile PBS, pH7.2-pH7.4

GENE INFORMATION

Gene Name

[Pkm pyruvate kinase, muscle \[Rattus norvegicus \(Norway rat\) \]](#)

Official Symbol

[Pkm](#)

Synonyms

Pkm; pyruvate kinase, muscle; PK; Pk3; Pkm2; PKM12; pyruvate kinase PKM; M2 pyruvate kinase; pyruvate kinase isozymes M1/M2; pyruvate kinase muscle isozyme

Gene ID

[25630](#)

mRNA Refseq

[NM_053297.2](#)

Protein Refseq

[NP_445749.1](#)

UniProt ID

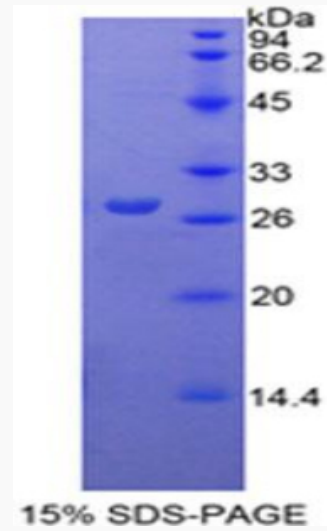
[P11980](#)

 Tel: 1-631-559-9269 1-516-512-3133

 Email: info@creative-biomart.com  Fax: 1-631-938-8127

 45-1 Ramsey Road, Shirley, NY 11967, USA

SDS-PAGE



 Tel: 1-631-559-9269 1-516-512-3133

 Email: info@creative-biomart.com  Fax: 1-631-938-8127

 45-1 Ramsey Road, Shirley, NY 11967, USA