

Recombinant Mouse Pkm protein, His&Myc-tagged

Cat. No. Pkm-526M **Lot. No.** (See product label)

SPECIFICATION

Product Overview	Recombinant Mouse Pkm protein(P52480)(1-531aa), fused with N-terminal His tag and C-terminal Myc tag, was expressed in Insect Cell.
Species	Mouse
Source	Insect Cells
ProteinLength	1-531aa
Form	If the delivery form is liquid, the default storage buffer is Tris/PBS-based buffer, 5%-50% glycerol. If the delivery form is lyophilized powder, the buffer before lyophilization is Tris/PBS-based buffer, 6% Trehalose, pH 8.0.
Molecular Mass	61.8 kDa
AA Sequence	MPKPHSEAGTAFIQTTQQLHAAMADTFLEHMCRLDIDSAPITARNTGIICTIGPASRSV EMLKEMIKSGMNVARLNFSHGTHEYHAETIKNVREATESFASDPILYRPVAVALDTK GPEIRTGLIKGSGTAEVELKKGATLKITLDNAYMEKCDENILWLDYKNICKVVEVGSKI YVDDGLISLQVKEKGADFLVTEVENGGSLGSKKGVNLPGAAVDLPVSEKDIQDLKF GVEQDVMVFASFIRKAADVHEVRKVLGEKGKNIKIISKIENHEGVRRFDEILEASDGI MVARGDLGIEIPAEEKVFLAQKMMIGRCNRAGKPVICATQMLESMIKKPRPTRAEGSD VANAVLDGADCIMLSGETAKGDYPLEAVRMQHLIAREAEAAIYHLQLFEELRRLAPIT SDPTEAAAVGAVEASFKCCSGAIIVLTKSGRSAHQVARYRPRAPIIAVTRNPQTARQA HLYRGIFPVLCKDAVLNAWAEDVDLRVNLAMDVGKARGFFKKGDVVIVLTGWRPGS

 Tel: 1-631-559-9269 1-516-512-3133

 Email: info@creative-biomart.com  Fax: 1-631-938-8127

 45-1 Ramsey Road, Shirley, NY 11967, USA

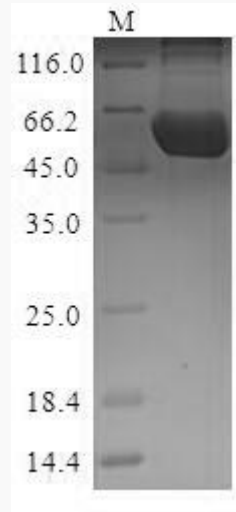
	GFTNTMRVVPVP
Purity	Greater than 90% as determined by SDS-PAGE.
Storage	Store at -20°C/-80°C upon receipt, aliquoting is necessary for mutiple use. Avoid repeated freeze-thaw cycles.
Reconstitution	Please reconstitute protein in deionized sterile water to a concentration of 0.1-1.0 mg/mL. We recommend to add 5-50% of glycerol (final concentration) and aliquot for long-term storage at -20°C/-80°C. Our default final concentration of glycerol is 50%.
GENE INFORMATION	
Gene Name	Pkm pyruvate kinase, muscle [Mus musculus]
Official Symbol	Pkm
Synonyms	Pkm; Pk3; Pkm2; PykmPyruvate kinase PKM; EC 2.7.1.40; Pyruvate kinase muscle isozyme
Gene ID	18746
mRNA Refseq	NM_001253883
Protein Refseq	NP_001240812
UniProt ID	P52480

 Tel: 1-631-559-9269 1-516-512-3133

 Email: info@creative-biomart.com  Fax: 1-631-938-8127

 45-1 Ramsey Road, Shirley, NY 11967, USA

SDS-PAGE



 Tel: 1-631-559-9269 1-516-512-3133

 Email: info@creative-biomart.com  Fax: 1-631-938-8127

 45-1 Ramsey Road, Shirley, NY 11967, USA