

Recombinant Mouse Pla2g10 Protein, His-tagged

Cat. No. Pla2g10-1944M Lot. No. (See product label)

SPECIFICATION

Product Overview	Recombinant Mouse Pla2g10 Protein (Gly29-Asn151) with N-His tag was expressed in E. coli.
Species	Mouse
Source	E.coli
ProteinLength	Gly29-Asn151
Description	<p>This gene encodes a member of the phospholipase A2 family of lipolytic enzymes that hydrolyzes glycerophospholipids to produce free fatty acids and lysophospholipids. The encoded protein undergoes proteolytic processing to generate a calcium-dependent enzyme that plays pivotal roles in the liberation of arachidonic acid from membrane phospholipids leading to the production of various inflammatory lipid mediators, such as prostaglandins. In response to myocardial ischemia/reperfusion, mice lacking the encoded protein display a reduction in myocardial infarct size partly through the suppression of neutrophil cytotoxic activities. Alternative splicing results in multiple transcript variants encoding different isoforms. All of these isoforms may undergo similar processing to generate the mature protein.</p>
Form	Freeze-dried powder
Molecular Mass	Predicted Molecular Mass: 43.9 kDa Accurate Molecular Mass: 44 kDa

 Tel: 1-631-559-9269 1-516-512-3133

 Email: info@creative-biomart.com  Fax: 1-631-938-8127

 45-1 Ramsey Road, Shirley, NY 11967, USA

Purity	> 90%
Applications	Positive Control; Immunogen; SDS-PAGE; WB.
Stability	The thermal stability is described by the loss rate. The loss rate was determined by accelerated thermal degradation test, that is, incubate the protein at 37 centigrade for 48h, and no obvious degradation and precipitation were observed. The loss rate is less than 5% within the expiration date under appropriate storage condition.
Storage	Avoid repeated freeze/thaw cycles. Store at 2-8 centigrade for one month. Aliquot and store at -80 centigrade for 12 months.
Storage Buffer	20mM Tris, 150mM NaCl, pH8.0, containing 1mM EDTA, 1mM DTT, 0.01% SKL, 5% Trehalose and Proclin300.
Reconstitution	Reconstitute in 20mM Tris, 150mM NaCl (pH8.0) to a concentration of 0.1-1.0 mg/mL. Do not vortex.

GENE INFORMATION

Gene Name	Pla2g10 phospholipase A2, group X [<i>Mus musculus</i> (house mouse)]
Official Symbol	Pla2g10
Synonyms	PLA2G10; phospholipase A2, group X; group 10 secretory phospholipase A2; GX sPLA2; group X secretory phospholipase A2; phosphatidylcholine 2-acylhydrolase 10; PLA2GX; sPLA2-X; mGXsPLA2;
Gene ID	26565
mRNA Refseq	NM_011987

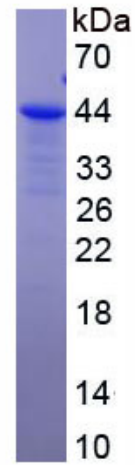
 Tel: 1-631-559-9269 1-516-512-3133

 Email: info@creative-biomart.com  Fax: 1-631-938-8127

 45-1 Ramsey Road, Shirley, NY 11967, USA

Protein Refseq NP_036117

UniProt ID Q9QXX3



Tel: 1-631-559-9269 1-516-512-3133

Email: info@creative-biomart.com Fax: 1-631-938-8127

45-1 Ramsey Road, Shirley, NY 11967, USA