

## Recombinant Rat Pla2g2a protein, His-tagged

Cat. No. Pla2g2a-5436R Lot. No. (See product label)

### SPECIFICATION

<b>Product Overview</b>	Recombinant Rat Pla2g2a protein(P14423)(22-146aa), fused with N-terminal His tag, was expressed in E.coli.
<b>Species</b>	Rat
<b>Source</b>	E.coli
<b>ProteinLength</b>	22-146aa
<b>Form</b>	If the delivery form is liquid, the default storage buffer is Tris/PBS-based buffer, 5%-50% glycerol. If the delivery form is lyophilized powder, the buffer before lyophilization is Tris/PBS-based buffer, 6% Trehalose, pH 8.0.
<b>Molecular Mass</b>	20.0 kDa
<b>Purity</b>	Greater than 90% as determined by SDS-PAGE.
<b>Storage</b>	Store at -20°C/-80°C upon receipt, aliquoting is necessary for mutiple use. Avoid repeated freeze-thaw cycles.
<b>Reconstitution</b>	We recommend that this vial be briefly centrifuged prior to opening to bring the contents to the bottom. Please reconstitute protein in deionized sterile water to a concentration of 0.1-1.0 mg/mL. We recommend to add 5-50% of glycerol (final concentration) and aliquot for long-term storage at -20°C/-80°C.

 Tel: 1-631-559-9269 1-516-512-3133

 Email: [info@creative-biomart.com](mailto:info@creative-biomart.com)  Fax: 1-631-938-8127

 45-1 Ramsey Road, Shirley, NY 11967, USA

**AA Sequence** SLLEFGQMILFKTGKRADVSYGFYGCHCGVGGGRGSPKDATDWCCVTHDCCYNRLE  
KRGCGTKFLTYKFSYRGGQISCSTNQDSCRKQLCQCDKAAAECFARNKKSYSYSLKY  
QFYPNKFCKGKTPSC

## GENE INFORMATION

**Gene Name** [Pla2g2a phospholipase A2, group IIA \(platelets, synovial fluid\) \[ Rattus norvegicus \]](#)

**Official Symbol** [Pla2g2a](#)

**Synonyms** PLA2G2A; phospholipase A2, group IIA (platelets, synovial fluid); phospholipase A2, membrane associated; GIIC sPLA2; platelet phospholipase A2; group IIA phospholipase A2; eted enzyme type IIA phospholipase A2; phosphatidylcholine 2-acylhydrolase 2A; sPLA2;

**Gene ID** [29692](#)

**mRNA Refseq** [NM\\_031598](#)

**Protein Refseq** [NP\\_113786](#)

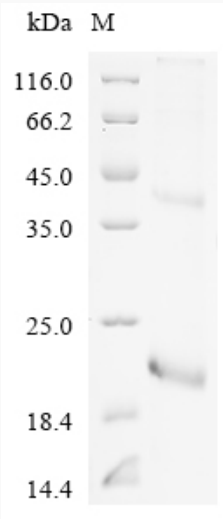
 Tel: 1-631-559-9269 1-516-512-3133

 Email: [info@creative-biomart.com](mailto:info@creative-biomart.com)  Fax: 1-631-938-8127

 45-1 Ramsey Road, Shirley, NY 11967, USA



SDS-PAGE



Tel: 1-631-559-9269 1-516-512-3133

Email: [info@creative-biomart.com](mailto:info@creative-biomart.com) Fax: 1-631-938-8127

45-1 Ramsey Road, Shirley, NY 11967, USA