

Recombinant Rat Pla2g2a protein, His & GST-tagged

Cat. No. Pla2g2a-8259R Lot. No. (See product label)

SPECIFICATION

Product Overview	Recombinant Rat Pla2g2a aa. (Ser22~Cys146 (Accession # P14423)) fused with N-terminal His & GST tag was produced in E. coli cells.
Species	Rat
Source	E.coli
ProteinLength	Ser22~Cys146
Description	Hydrolyzes acyl group at the sn-2 position of phospholipids, forming non-esterified fatty acids and lysophospholipids; plays a critical role in inflammation; induces proliferation of smooth muscle cells.
Form	Freeze-dried powder
Molecular Mass	Predicted Molecular Mass: 46.5kDa.
Endotoxin	<1.0EU per 1ug (determined by the LAL method)
Purity	>95%
Characteristic	The isoelectric point is 8.6.
Applications	SDS-PAGE; WB; ELISA; IP.

 Tel: 1-631-559-9269 1-516-512-3133

 Email: info@creative-biomart.com  Fax: 1-631-938-8127

 45-1 Ramsey Road, Shirley, NY 11967, USA

Stability The thermal stability is described by the loss rate of the target protein. The loss rate was determined by accelerated thermal degradation test, that is, incubate the protein at 37°C for 48h, and no obvious degradation and precipitation were observed. (Referring from China Biological Products Standard, which was calculated by the Arrhenius equation.) The loss of this protein is less than 5% within the expiration date under appropriate storage condition.

Storage Avoid repeated freeze/thaw cycles. Store at 2-8°C for one month. Aliquot and store at -80°C for 12 months.

Storage Buffer Supplied as lyophilized form in PBS, pH7.4, containing 5% sucrose, 0.01% sarcosyl.

Reconstitution Reconstitute in sterile PBS, pH7.2-pH7.4.

GENE INFORMATION

Gene Name [Pla2g2a phospholipase A2 group IIA \[Rattus norvegicus \(Norway rat\) \]](#)

Official Symbol [Pla2g2a](#)

Gene ID [29692](#)

mRNA Refseq [NM_031598.3](#)

Protein Refseq [NP_113786.3](#)

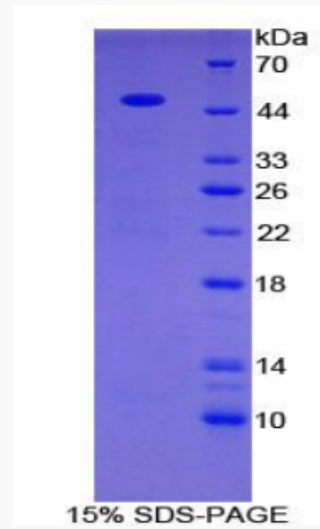
UniProt ID [P14423](#)

 Tel: 1-631-559-9269 1-516-512-3133

 Email: info@creative-biomart.com  Fax: 1-631-938-8127

 45-1 Ramsey Road, Shirley, NY 11967, USA

SDS-PAGE



 Tel: 1-631-559-9269 1-516-512-3133

 Email: info@creative-biomart.com  Fax: 1-631-938-8127

 45-1 Ramsey Road, Shirley, NY 11967, USA