

Recombinant Mouse PLA2G2D, His tagged

Cat. No. Pla2g2d-489M Lot. No. (See product label)

SPECIFICATION

Product Overview	Recombinant Mouse PLA2G2D with His-tag was expressed in E. coli.
Species	Mouse
Source	E.coli
Description	Enables calcium-dependent phospholipase A2 activity; heparan sulfate proteoglycan binding activity; and heparin binding activity. Involved in glycerophospholipid metabolic process and regulation of acute inflammatory response to antigenic stimulus. Acts upstream of or within CD4-positive, CD25-positive, alpha-beta regulatory T cell differentiation and negative regulation of T cell proliferation. Located in extracellular region. Is expressed in several structures, including alimentary system; brain; gonad; hemolymphoid system gland; and lung. Orthologous to human PLA2G2D (phospholipase A2 group IID).
Molecular Mass	~ 30 kDa
Purity	> 90% by SDS-PAGE
Storage	Short Term Storage at +4 centigrade, Long Term Storage at -20 centigrade. Prepare aliquots and store at -80 centigrade. Avoid freeze/thaw cycles.
Concentration	0.4 mg/mL
Storage Buffer	50mM Tris-HCl buffer (pH 8.0), 200mM NaCl

 Tel: 1-631-559-9269 1-516-512-3133

 Email: info@creative-biomart.com  Fax: 1-631-938-8127

 45-1 Ramsey Road, Shirley, NY 11967, USA

GENE INFORMATION

Gene Name [Pla2g2d phospholipase A2, group IID \[Mus musculus \(house mouse\) \]](#)

Official Symbol [PLA2G2D](#)

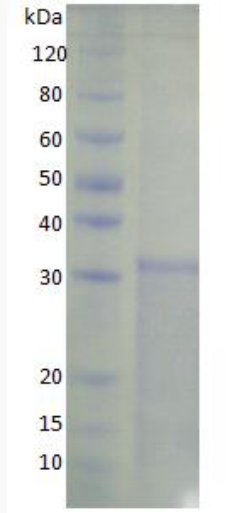
Synonyms [PLA2G2D](#); phospholipase A2, group IID; group IID secretory phospholipase A2; [PLA2IID](#); [sPLA2-IID](#); [GIID sPLA2](#); phosphatidylcholine 2-acylhydrolase 2D; secretory-type PLA, stroma-associated homolog; [mGIID](#); [Splash](#); [MGC130437](#);

Gene ID [18782](#)

mRNA Refseq [NM_011109](#)

Protein Refseq [NP_035239](#)

15% reducing SDS-PAGE analysis of purified Mouse PLA2G2D



 Tel: 1-631-559-9269 1-516-512-3133

 Email: info@creative-biomart.com  Fax: 1-631-938-8127

 45-1 Ramsey Road, Shirley, NY 11967, USA