

Recombinant Mouse Pla2g7 protein, His-tagged

Cat. No. Pla2g7-7853M Lot. No. (See product label)

SPECIFICATION

Product Overview	Recombinant Mouse Pla2g7 aa. (Phe22~Asn440) fused with N-terminal His tag was produced in E. coli cells.
Species	Mouse
Source	E.coli
ProteinLength	Phe22~Asn440
Form	Freeze-dried powder
Molecular Mass	48kDa as determined by SDS-PAGE reducing conditions.
Endotoxin	<1.0EU per 1g (determined by the LAL method)
Purity	>95%
Characteristic	The isoelectric point is 6.6.
Applications	SDS-PAGE; WB; ELISA; IP; CoIP; Purification; Amine Reactive Labeling.
Stability	The thermal stability is described by the loss rate. The loss rate was determined by accelerated thermal degradation test, that is, incubate the protein at 37°C for 48h, and no obvious degradation and precipitation were observed. The loss rate is less than 5% within the expiration date under appropriate storage condition.

 Tel: 1-631-559-9269 1-516-512-3133

 Email: info@creative-biomart.com  Fax: 1-631-938-8127

 45-1 Ramsey Road, Shirley, NY 11967, USA



Storage	Avoid repeated freeze/thaw cycles. Store at 2-8°C for one month. Aliquot and store at -80°C for 12 months.
Concentration	200µg/mL
Storage buffer	PBS, pH7.4, containing 1mM DTT, 5% trehalose, 0.01% sarcosyl and Proclin300
Reconstitution	Reconstitute in PBS (pH7.4) to a concentration of 0.1-1.0 mg/mL. Do not vortex.

GENE INFORMATION

Gene Name	Pla2g7 phospholipase A2, group VII (platelet-activating factor acetylhydrolase, plasma) [<i>Mus musculus</i> (house mouse)]
Official Symbol	Pla2g7
Synonyms	Pla2g7; phospholipase A2, group VII (platelet-activating factor acetylhydrolase, plasma); PAF-AH; R75400; platelet-activating factor acetylhydrolase; 1-alkyl-2-acetyl-glycerophosphocholine esterase; 2-acetyl-1-alkyl-glycerophosphocholine esterase; LDL-PLA(2); LDL-associated phospholipase A2; PAF 2-acylhydrolase; PAF acetylhydrolase
Gene ID	27226
mRNA Refseq	NM_013737.5
Protein Refseq	NP_038765.2
UniProt ID	Q60963

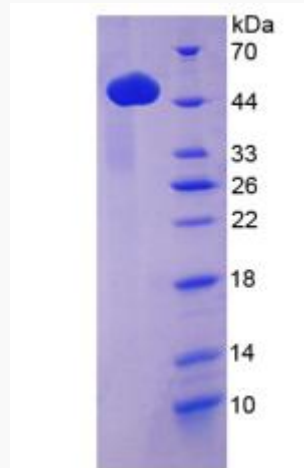
Tel: 1-631-559-9269 1-516-512-3133

Email: info@creative-biomart.com Fax: 1-631-938-8127

45-1 Ramsey Road, Shirley, NY 11967, USA



SDS-PAGE



Tel: 1-631-559-9269 1-516-512-3133

Email: info@creative-biomart.com Fax: 1-631-938-8127

45-1 Ramsey Road, Shirley, NY 11967, USA