

Recombinant Mouse Pla2r1 protein, His & GST-tagged

Cat. No. Pla2r1-1027M Lot. No. (See product label)

SPECIFICATION

Product Overview	Recombinant Mouse Pla2r1 aa. (Trp1418~Pro1487 (Accession # Q62028) fused with N-terminal His & GST tag was produced in E. coli cells.
Species	Mouse
Source	E.coli
ProteinLength	Trp1418~Pro1487
Form	Freeze-dried powder
Molecular Mass	Predicted Molecular Mass: 40.4kDa.
Endotoxin	<1.0EU per 1g (determined by the LAL method)
Purity	>95%
Characteristic	The isoelectric point is 6.4.
Applications	SDS-PAGE; WB; ELISA; IP.
Stability	The thermal stability is described by the loss rate of the target protein. The loss rate was determined by accelerated thermal degradation test, that is, incubate the protein at 37°C for 48h, and no obvious degradation and precipitation were observed. (Referring from China Biological Products Standard, which was calculated by the

 Tel: 1-631-559-9269 1-516-512-3133

 Email: info@creative-biomart.com  Fax: 1-631-938-8127

 45-1 Ramsey Road, Shirley, NY 11967, USA

Arrhenius equation.) The loss of this protein is less than 5% within the expiration date under appropriate storage condition.

Storage

Avoid repeated freeze/thaw cycles. Store at 2-8°C for one month. Aliquot and store at -80°C for 12 months.

Storage buffer

Supplied as lyophilized form in PBS, pH7.4, containing 5% trehalose, 0.01% sarcosyl.

Reconstitution

Reconstitute in sterile PBS, pH7.2-pH7.4.

GENE INFORMATION

Gene Name

Pla2r1 phospholipase A2 receptor 1 [*Mus musculus* (house mouse)]

Official Symbol

Pla2r1

Synonyms

Pla2r1; phospholipase A2 receptor 1; Pla2r; Pla2-r; Pla2g1br; secretory phospholipase A2 receptor; 180 kDa secretory phospholipase A2 receptor; M-type receptor; PLA2-I receptor; phospholipase A2, group IB, pancreas, receptor

Gene ID

18779

mRNA Refseq

NM_008867.2

Protein Refseq

NP_032893.1

UniProt ID

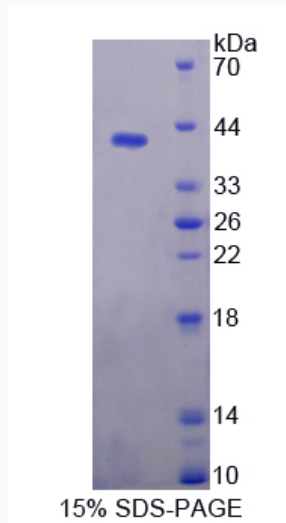
Q62028

 Tel: 1-631-559-9269 1-516-512-3133

 Email: info@creative-biomart.com  Fax: 1-631-938-8127

 45-1 Ramsey Road, Shirley, NY 11967, USA

SDS-PAGE



 Tel: 1-631-559-9269 1-516-512-3133

 Email: info@creative-biomart.com  Fax: 1-631-938-8127

 45-1 Ramsey Road, Shirley, NY 11967, USA