

## Recombinant Rat Plat protein, His-tagged

Cat. No. Plat-2741R Lot. No. (See product label)

### SPECIFICATION

<b>Product Overview</b>	Recombinant Rat Plat aa. (Gly311~Asn487) fused with N-terminal His tag was produced in E. coli cells.
<b>Species</b>	Rat
<b>Source</b>	E.coli
<b>ProteinLength</b>	Gly311~Asn487
<b>Form</b>	Freeze-dried powder
<b>Molecular Mass</b>	33kDa as determined by SDS-PAGE reducing conditions.
<b>Endotoxin</b>	<1.0EU per 1g (determined by the LAL method)
<b>Purity</b>	>92%
<b>Characteristic</b>	The isoelectric point is 6.2.
<b>Applications</b>	Positive Control; Immunogen; SDS-PAGE; WB.
<b>Stability</b>	The thermal stability is described by the loss rate. The loss rate was determined by accelerated thermal degradation test, that is, incubate the protein at 37°C for 48h, and no obvious degradation and precipitation were observed. The loss rate is less than 5% within the expiration date under appropriate storage condition.

 Tel: 1-631-559-9269 1-516-512-3133

 Email: [info@creative-biomart.com](mailto:info@creative-biomart.com)  Fax: 1-631-938-8127

 45-1 Ramsey Road, Shirley, NY 11967, USA



<b>Storage</b>	Avoid repeated freeze/thaw cycles. Store at 2-8°C for one month. Aliquot and store at -80°C for 12 months.
<b>Concentration</b>	200µg/mL
<b>Storage buffer</b>	20mM Tris, 150mM NaCl, pH8.0, containing 1mM EDTA, 1mM DTT, 0.01% sarcosyl, 5%Trehalose and Proclin300.
<b>Reconstitution</b>	Reconstitute in 20mM Tris, 150mM NaCl (pH8.0) to a concentration of 0.1-1.0 mg/mL. Do not vortex.

## GENE INFORMATION

<b>Gene Name</b>	Plat plasminogen activator, tissue type [ <i>Rattus norvegicus</i> (Norway rat) ]
<b>Official Symbol</b>	Plat
<b>Synonyms</b>	tPA; PATISS; t-PA; t-plasminogen activator; tissue plasminogen activator; tissue-type plasminogen activator
<b>Gene ID</b>	25692
<b>mRNA Refseq</b>	NM_013151.2
<b>Protein Refseq</b>	NP_037283.2
<b>UniProt ID</b>	P19637

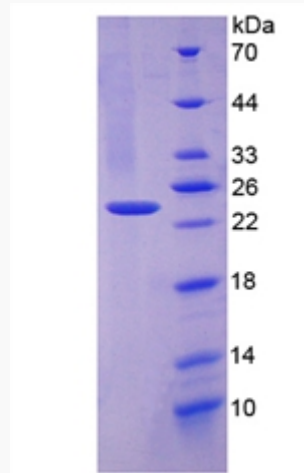
Tel: 1-631-559-9269 1-516-512-3133

Email: [info@creative-biomart.com](mailto:info@creative-biomart.com) Fax: 1-631-938-8127

45-1 Ramsey Road, Shirley, NY 11967, USA



SDS-PAGE



Tel: 1-631-559-9269 1-516-512-3133

Email: [info@creative-biomart.com](mailto:info@creative-biomart.com) Fax: 1-631-938-8127

45-1 Ramsey Road, Shirley, NY 11967, USA