

## Recombinant Rat Plce1 protein, His & T7-tagged

Cat. No. Plce1-1017R Lot. No. (See product label)

### SPECIFICATION

<b>Product Overview</b>	Recombinant Rat Plce1 aa. (Met1~Lys250 (Accession # Q99P84) fused with N-terminal His & T7 tag was produced in E. coli cells.
<b>Species</b>	Rat
<b>Source</b>	E.coli
<b>ProteinLength</b>	Met1~Lys250
<b>Description</b>	One of four classes of phospholipase C; directly regulated by Ras.
<b>Form</b>	Freeze-dried powder
<b>Molecular Mass</b>	35kDa as determined by SDS-PAGE reducing conditions.
<b>Endotoxin</b>	<1.0EU per 1g (determined by the LAL method)
<b>Purity</b>	>90%
<b>Characteristic</b>	The isoelectric point is 5.2.
<b>Applications</b>	SDS-PAGE; WB; ELISA; IP.
<b>Stability</b>	The thermal stability is described by the loss rate of the target protein. The loss rate was determined by accelerated thermal degradation test, that is, incubate the protein

 Tel: 1-631-559-9269 1-516-512-3133

 Email: [info@creative-biomart.com](mailto:info@creative-biomart.com)  Fax: 1-631-938-8127

 45-1 Ramsey Road, Shirley, NY 11967, USA

at 37°C for 48h, and no obvious degradation and precipitation were observed. (Referring from China Biological Products Standard, which was calculated by the Arrhenius equation.) The loss of this protein is less than 5% within the expiration date under appropriate storage condition.

**Storage**

Avoid repeated freeze/thaw cycles. Store at 2-8°C for one month. Aliquot and store at -80°C for 12 months.

**Storage buffer**

Supplied as lyophilized form in 20mM Tris, 150mM NaCl, pH8.0, containing 1mM EDTA, 1mM DTT, 0.01% sarcosyl, 5% trehalose, and preservative.

**Reconstitution**

Reconstitute in sterile ddH<sub>2</sub>O.

## GENE INFORMATION

**Gene Name**

Plce1 phospholipase C, epsilon 1 [ *Rattus norvegicus* (Norway rat) ]

**Official Symbol**

Plce1

**Synonyms**

Plce1; phospholipase C, epsilon 1; Plce; 1-phosphatidylinositol 4,5-bisphosphate phosphodiesterase epsilon-1; PLC-epsilon-1; phosphoinositide phospholipase C-epsilon-1; phosphoinositide-specific phospholipase C epsilon-1; phospholipase C epsilon

**Gene ID**

114633

**mRNA Refseq**

NM\_053758.2

**Protein Refseq**

NP\_446210.1

**UniProt ID**

Q99P84

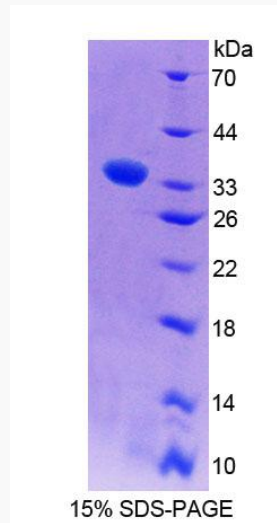
 Tel: 1-631-559-9269 1-516-512-3133

 Email: [info@creative-biomart.com](mailto:info@creative-biomart.com)  Fax: 1-631-938-8127

 45-1 Ramsey Road, Shirley, NY 11967, USA



**SDS-PAGE**



Tel: 1-631-559-9269 1-516-512-3133

Email: [info@creative-biomart.com](mailto:info@creative-biomart.com) Fax: 1-631-938-8127

45-1 Ramsey Road, Shirley, NY 11967, USA