

Recombinant Human coronavirus 229E papain-like peptidase 1 (PLpro), His-tagged

Cat. No. Plpro-01V Lot. No. (See product label)

SPECIFICATION

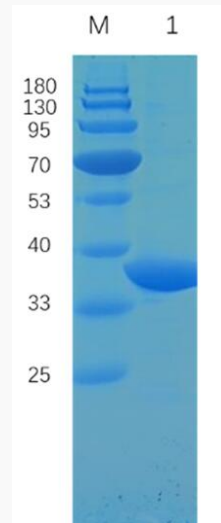
Product Overview	Recombinant Human coronavirus 229E Plpro protein, fused to His-tag, was expressed in E. coli.
Species	HCoV
Source	E.coli
Form	50 mM Tris-HCl, 300 mM NaCl, pH 8.0
Molecular Mass	The protein has a calculated MW of 36.8 kDa.
AA Sequence	MEVKTIKVFTTVDNTNLHTQLVDMSMTYGQQFGPTYLDGADVTKIKPHVNHEGKTFV VLPSDDTLRSEAFEYYHTLDESFLGRYMSALNHTKKWKFPQVGGLTSIKWADNNSY LSSVLLALQQLEVKFNAPALQEAYYRARAGDAANFCALILAYSNKTVGELGDVRETM THLLQHANLESKRVLNVVCKHCGQKTTTTLTGVEAVMYMGTLSDNLKTGVSIPCV CGRDATQYLVQQESSFVMMSAPPAEYKLQQGTFLCANEYTGNYQCGHYTHITAKE TLYRIDGAHLTKMSEYKGPVTDVDFYKETSYTTTIKPVSLHHHHHH
Purity	90 by SDS-PAGE
Storage	Store it under sterile conditions at -20 to -80°C. It is recommended that the protein be aliquoted for optimal storage. Avoid repeated freeze-thaw cycles.
Concentration	0.72 mg/ml

 Tel: 1-631-559-9269 1-516-512-3133

 Email: info@creative-biomart.com  Fax: 1-631-938-8127

 45-1 Ramsey Road, Shirley, NY 11967, USA

SDS-PAGE of PIpro-01V



 Tel: 1-631-559-9269 1-516-512-3133

 Email: info@creative-biomart.com  Fax: 1-631-938-8127

 45-1 Ramsey Road, Shirley, NY 11967, USA