

Recombinant Mouse Pls3 Protein, His-tagged

Cat. No. Pls3-750M Lot. No. (See product label)

SPECIFICATION

Product Overview	Recombinant Mouse Pls3(Ala5~Leu251) fused with His tag at N-terminal was expressed in E. coli.
Species	Mouse
Source	E.coli
ProteinLength	Ala5~Leu251
Form	PBS, pH7.4, containing 0.01% SKL, 1mM DTT, 5% Trehalose and Proclin300.
Molecular Mass	29.2kDa
Endotoxin	<1.0EU per 1g (determined by the LAL method)
Purity	> 92%
Applications	Positive Control; Immunogen; SDS-PAGE; WB. If bio-activity of the protein is needed, please check active protein.
Stability	The thermal stability is described by the loss rate. The loss rate was determined by accelerated thermal degradation test, that is, incubate the protein at 37 centigrade for 48h, and no obvious degradation and precipitation were observed. The loss rate is less than 5% within the expiration date under appropriate storage condition.

 Tel: 1-631-559-9269 1-516-512-3133

 Email: info@creative-biomart.com  Fax: 1-631-938-8127

 45-1 Ramsey Road, Shirley, NY 11967, USA

Storage	Avoid repeated freeze/thaw cycles. Store at 2-8 centigrade for one month. Aliquot and store at -80 centigrade for 12 months.
----------------	--

Reconstitution	Reconstitute in PBS or others.
-----------------------	--------------------------------

GENE INFORMATION

Gene Name	Pls3 plastin 3 (T-isoform) [<i>Mus musculus</i>]
------------------	--

Official Symbol	Pls3
------------------------	------

Synonyms	PLS3; plastin 3 (T-isoform); plastin-3; T-plastin; plastin 3, T; AI115446; AL024105; T-fimbrin;
-----------------	---

Gene ID	102866
----------------	--------

mRNA Refseq	NM_001166453
--------------------	--------------

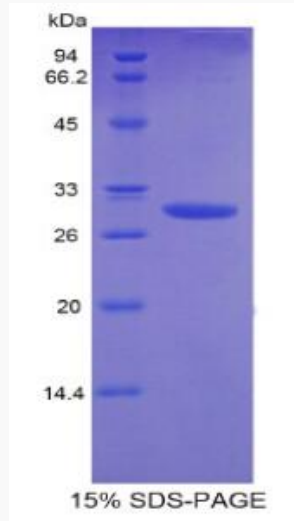
Protein Refseq	NP_001159925
-----------------------	--------------

UniProt ID	Q99K51
-------------------	--------

 Tel: 1-631-559-9269 1-516-512-3133

 Email: info@creative-biomart.com  Fax: 1-631-938-8127

 45-1 Ramsey Road, Shirley, NY 11967, USA



Tel: 1-631-559-9269 1-516-512-3133

Email: info@creative-biomart.com Fax: 1-631-938-8127

45-1 Ramsey Road, Shirley, NY 11967, USA