

Recombinant Mouse Pltp protein, His-tagged

Cat. No. Pltp-4531M Lot. No. (See product label)

SPECIFICATION

Product Overview	Recombinant Mouse Pltp protein(P55065)(18-493 aa), fused with C-terminal His tag, was expressed in Mammalian Cells.
Species	Mouse
Source	Mammalian Cells
ProteinLength	18-493 aa
Form	For liquid formulations, the standard storage buffer consists of a Tris or PBS based solution supplemented with 5-50% glycerol. When provided as lyophilized powder, the product undergoes freeze-drying from a Tris- or PBS-based formulation containing 6% trehalose, adjusted to pH 8.0 prior to the lyophilization process.
Molecular Mass	54.0 kDa
AASequence	ELPGCKIRVTSAAALDLVKQEGLRFLEQELETITIPDVYGAKGHFYFNISDVRVTQLHLI SSELHFQPDQDLLLLNISNASLGLHFRRQLLYWFLYDGGYINASAEGVSIRTGLQLSQ DSSGRIKVSNSVCEASVSKMNMAFGGTFRRMYNFFSTFITSGMRFLNQQICPVLYH AGTVLLNSLLDTPVVRSSVDDLVDGIDYSLLKDPVVSNGNLDMEFRGAFFPLKEDNWS LPNRAVEPQLEDDERMVYVAFSEFFFDSAMESYFQAGALQLTLVGDKVPSDLDMLL RATYFGSIVLLSPTVINSPLKLEATSPPRCTIKPSGTTISITASVTITLAPPMLPEVEL SKMIMEGRLSAKLTRGKALRVKLDLRRFQIYSNQSALSLALIPLQAPLKTLLQIGVM PLLNERTWRGVQIPLPEGINFVREVVTNHAGFVTVGADLHFAKGLREVIDKNRPADV AASHVPPPSAAAA

 Tel: 1-631-559-9269 1-516-512-3133

 Email: info@creative-biomart.com  Fax: 1-631-938-8127

 45-1 Ramsey Road, Shirley, NY 11967, USA

Purity Greater than 85% as determined by SDS-PAGE.

Storage Store at -20°C/-80°C upon receipt, aliquoting is necessary for mutiple use. Avoid repeated freeze-thaw cycles.

Reconstitution Please reconstitute protein indeionized sterile water to a concentration of 0.1-1.0 mg/mL. Aliquot for long-term storage at -80°C.

GENE INFORMATION

Gene Name [Pltp phospholipid transfer protein \[Mus musculus \]](#)

Official Symbol [Pltp](#)

Synonyms PLTP; phospholipid transfer protein; lipid transfer protein II; Bpife; OD107;

Gene ID [18830](#)

mRNA Refseq [NM_011125](#)

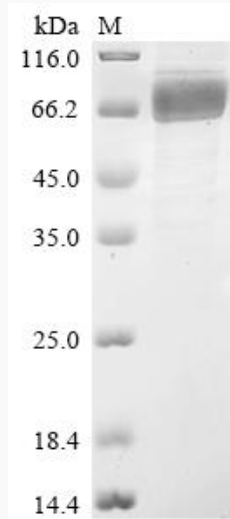
Protein Refseq [NP_035255](#)

 Tel: 1-631-559-9269 1-516-512-3133

 Email: info@creative-biomart.com  Fax: 1-631-938-8127

 45-1 Ramsey Road, Shirley, NY 11967, USA

SDS-PAGE



 Tel: 1-631-559-9269 1-516-512-3133

 Email: info@creative-biomart.com  Fax: 1-631-938-8127

 45-1 Ramsey Road, Shirley, NY 11967, USA