

Recombinant Mouse Pltp protein, His-tagged

Cat. No. Pltp-5633M **Lot. No.** (See product label)

SPECIFICATION

Product Overview	Recombinant Mouse Pltp protein(P55065)(18-493aa), fused with N-terminal His tag, was expressed in E.coli.
Species	Mouse
Source	E.coli
ProteinLength	18-493a.a.
Tag	His
Form	If the delivery form is liquid, the default storage buffer is Tris/PBS-based buffer, 5%-50% glycerol. If the delivery form is lyophilized powder, the buffer before lyophilization is Tris/PBS-based buffer, 6% Trehalose, pH 8.0.
Molecular Mass	56.7 kDa
Purity	Greater than 90% as determined by SDS-PAGE.
Storage	Store at -20°C/-80°C upon receipt, aliquoting is necessary for mutiple use. Avoid repeated freeze-thaw cycles.
Reconstitution	We recommend that this vial be briefly centrifuged prior to opening to bring the contents to the bottom. Please reconstitute protein in deionized sterile water to a concentration of 0.1-1.0 mg/mL.We recommend to add 5-50% of glycerol (final

 Tel: 1-631-559-9269 1-516-512-3133

 Email: info@creative-biomart.com  Fax: 1-631-938-8127

 45-1 Ramsey Road, Shirley, NY 11967, USA

concentration) and aliquot for long-term storage at -20°C/-80°C.

AA Sequence

ELPGCKIRVTSAAALDLVKQEGLRFLEQELETITIPDVYGAKGHFYFNISDVRVTQLHLI
 SSELHFQPDQDLLLNISNASLGLHFRRQLLYWFLYDGGYINASAEGVSIRTGLQLSQ
 DSSGRIKVSNSVCEASVSKMNMAFGGTFRRMYNFFSTFITSGMRFLNQQICPVLYH
 AGTVLLNSLLDTPVVRSSVDDLVDLVDYDYSLLKDPVVSNGNLDMEFRGAFFPLKEDNWS
 LPNRAVEPQLEDDERMVYVAFSEFFFDSAMESYFQAGALQLTLVGDKVPSDLDMLL
 RATYFGSIVLLSPTVINSPLKLEATSPPRCTIKPSGTTISITASVTITLAPPMLPEVEL
 SKMIMEGRLSAKLTLRGKALRVKLDLRRFQIYSNQSALSLALIPLQAPLKTLLQIGVM
 PLLNERTWRGVQIPLPEGINFVREVVTNHAGFVTVGADLHFAKGLREVIDKNRPADV
 AASHVPPPSAAAA

GENE INFORMATION

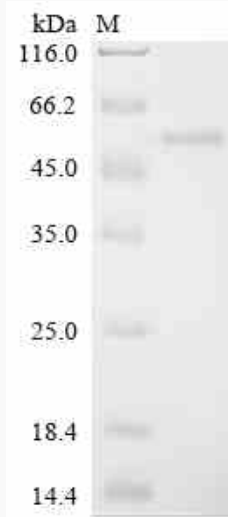
Gene Name	Pltp phospholipid transfer protein [Mus musculus]
Official Symbol	Pltp
Synonyms	PLTP; phospholipid transfer protein; lipid transfer protein II; Bpife; OD107;
Gene ID	18830
mRNA Refseq	NM_011125
Protein Refseq	NP_035255

 Tel: 1-631-559-9269 1-516-512-3133

 Email: info@creative-biomart.com  Fax: 1-631-938-8127

 45-1 Ramsey Road, Shirley, NY 11967, USA

SDS-PAGE



 Tel: 1-631-559-9269 1-516-512-3133

 Email: info@creative-biomart.com  Fax: 1-631-938-8127

 45-1 Ramsey Road, Shirley, NY 11967, USA