

Recombinant Rat Por protein, His & T7-tagged

Cat. No. Por-7967R **Lot. No.** (See product label)

SPECIFICATION

Product Overview	Recombinant Rat Por aa. (Gly210~Glu578 (Accession # P00388)) fused with N-terminal His & T7 tag was produced in E. coli cells.
Species	Rat
Source	E.coli
ProteinLength	Gly210~Glu578
Description	Plays a role in electron transport.
Form	Freeze-dried powder
Molecular Mass	46kDa as determined by SDS-PAGE reducing conditions.
Endotoxin	<1.0EU per 1ug (determined by the LAL method)
Purity	>95%
Characteristic	The isoelectric point is 5.5.
Applications	SDS-PAGE; WB; ELISA; IP
Stability	The thermal stability is described by the loss rate of the target protein. The loss rate was determined by accelerated thermal degradation test, that is, incubate the protein

 Tel: 1-631-559-9269 1-516-512-3133

 Email: info@creative-biomart.com  Fax: 1-631-938-8127

 45-1 Ramsey Road, Shirley, NY 11967, USA

at 37°C for 48h, and no obvious degradation and precipitation were observed. (Referring from China Biological Products Standard, which was calculated by the Arrhenius equation.) The loss of this protein is less than 5% within the expiration date under appropriate storage condition.

Storage	Avoid repeated freeze/thaw cycles. Store at 2-8°C for one month. Aliquot and store at -80°C for 12 months.
Storage Buffer	Supplied as lyophilized form in PBS, pH7.4, containing 5% trehalose, 0.01% sarcosyl.
Reconstitution	Reconstitute in sterile PBS, pH7.2-pH7.4.

GENE INFORMATION

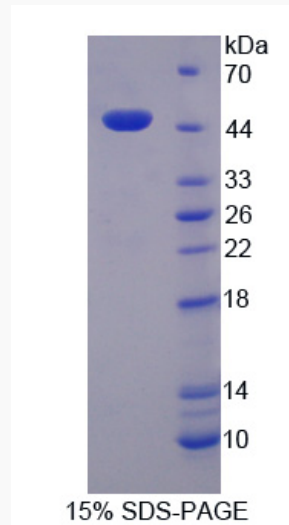
Gene Name	Por cytochrome p450 oxidoreductase [<i>Rattus norvegicus</i> (Norway rat)]
Official Symbol	Por
Synonyms	Por; cytochrome p450 oxidoreductase; CYPOR; NADPH--cytochrome P450 reductase; CPR; P450 (cytochrome) oxidoreductase; P450R; cytochrome P450 reductase
Gene ID	29441
mRNA Refseq	NM_031576.1
Protein Refseq	NP_113764.1
UniProt ID	P00388

 Tel: 1-631-559-9269 1-516-512-3133

 Email: info@creative-biomart.com  Fax: 1-631-938-8127

 45-1 Ramsey Road, Shirley, NY 11967, USA

SDS-PAGE



 Tel: 1-631-559-9269 1-516-512-3133

 Email: info@creative-biomart.com  Fax: 1-631-938-8127

 45-1 Ramsey Road, Shirley, NY 11967, USA