

Recombinant Rat Pou2f2 protein, His & T7-tagged

Cat. No. Pou2f2-7113R Lot. No. (See product label)

SPECIFICATION

| | |
|-------------------------|--|
| Product Overview | Recombinant Rat Pou2f2 aa. (Ala49~Ile288) fused with N-terminal His & T7 tag was produced in E. coli cells. |
| Species | Rat |
| Source | E.coli |
| ProteinLength | Ala49~Ile288 |
| Description | Organic cation transporter; involved in the translocation of agmatine. |
| Form | Freeze-dried powder |
| Molecular Mass | Predicted Molecular Mass: 29.7kDa |
| Endotoxin | <1.0EU per 1ug (determined by the LAL method) |
| Purity | >95% |
| Characteristic | The isoelectric point is 8.6. |
| Applications | SDS-PAGE; WB; ELISA; IP. |
| Stability | The thermal stability is described by the loss rate of the target protein. The loss rate was determined by accelerated thermal degradation test, that is, incubate the protein |

 Tel: 1-631-559-9269 1-516-512-3133

 Email: info@creative-biomart.com  Fax: 1-631-938-8127

 45-1 Ramsey Road, Shirley, NY 11967, USA

at 37°C for 48h, and no obvious degradation and precipitation were observed. (Referring from China Biological Products Standard, which was calculated by the Arrhenius equation.) The loss of this protein is less than 5% within the expiration date under appropriate storage condition.

| | |
|-----------------------|--|
| Storage | Avoid repeated freeze/thaw cycles. Store at 2-8°C for one month. Aliquot and store at -80°C for 12 months. |
| Storage buffer | Supplied as lyophilized form in PBS, pH7.4, containing 5% sucrose, 0.01% sarcosyl. |
| Reconstitution | Reconstitute in sterile PBS, pH7.2-pH7.4. |

GENE INFORMATION

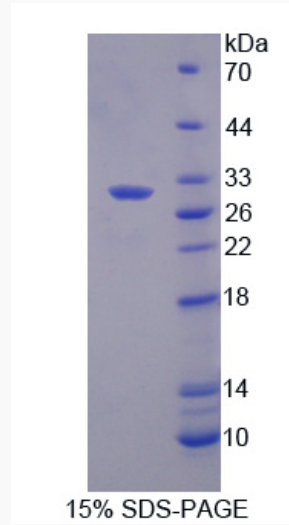
| | |
|------------------------|--|
| Gene Name | Pou2f2 POU class 2 homeobox 2 [Rattus norvegicus (Norway rat)] |
| Official Symbol | Pou2f2 |
| Synonyms | Pou2f2; POU class 2 homeobox 2; Oct2; 2-Oct; POU domain, class 2, transcription factor 2 |
| Gene ID | 117058 |
| mRNA Refseq | NM_001271204.2 |
| Protein Refseq | NP_001258133.2 |

 Tel: 1-631-559-9269 1-516-512-3133

 Email: info@creative-biomart.com  Fax: 1-631-938-8127

 45-1 Ramsey Road, Shirley, NY 11967, USA

SDS-PAGE



 Tel: 1-631-559-9269 1-516-512-3133

 Email: info@creative-biomart.com  Fax: 1-631-938-8127

 45-1 Ramsey Road, Shirley, NY 11967, USA