

Recombinant Mouse Ppt1 protein, His-tagged

Cat. No. Ppt1-574M **Lot. No.** (See product label)

SPECIFICATION

Product Overview	Recombinant Mouse Ppt1 protein(O88531)(28-306aa), fused with C-terminal His tag, was expressed in HEK293.
Species	Mouse
Source	HEK293
ProteinLength	28-306aa
Tag	C-His
Form	If the delivery form is liquid, the default storage buffer is Tris/PBS-based buffer, 5%-50% glycerol. If the delivery form is lyophilized powder, the buffer before lyophilization is Tris/PBS-based buffer, 6% Trehalose, pH 8.0.
Molecular Mass	33.0 kDa
Purity	Greater than 90% as determined by SDS-PAGE. Greater than 90% as determined by SEC-HPLC.
Storage	Store at -20°C/-80°C upon receipt, aliquoting is necessary for mutiple use. Avoid repeated freeze-thaw cycles.
Reconstitution	We recommend that this vial be briefly centrifuged prior to opening to bring the contents to the bottom. Please reconstitute protein in deionized sterile water to a

 Tel: 1-631-559-9269 1-516-512-3133

 Email: info@creative-biomart.com  Fax: 1-631-938-8127

 45-1 Ramsey Road, Shirley, NY 11967, USA

concentration of 0.1-1.0 mg/mL. We recommend to add 5-50% of glycerol (final concentration) and aliquot for long-term storage at -20°C/-80°C.

AA Sequence

DPPSPPLVIWHGMGDSCCNPMMSGVIKKMVEKEIPGIYVLSLEIGKNMMEDVENSF
 FLNVNVQVNMVCQILEKDPKLQQGYNAIGFSQGGQFLRAVAQRCPTPPMRTLISVG
 GQHQGVFGLPRCPGESSHICDFIRKSLNAGAYSKLVQERLVQAQYWHDPIKESVYR
 NYSIFLADINQERCVNESYKKNLMALKKFVMVKFFNDSIVDPVDSEWFGFYRSGQAK
 ETIPLQESTLYTEDRLGLKKMDKAGKLVFLAKEGDHLQISKEWFTAHIIPFLK

GENE INFORMATION

Gene Name [Ppt1 palmitoyl-protein thioesterase 1 \[Mus musculus \]](#)

Official Symbol [Ppt1](#)

Synonyms PPT1; palmitoyl-protein thioesterase 1; PPT-1; palmitoyl-protein hydrolase 1; PPT; CLN1; INCL; C77813; AA960502; D4Ert184e; 9530043G02Rik; MGC107420;

Gene ID [19063](#)

mRNA Refseq [NM_008917](#)

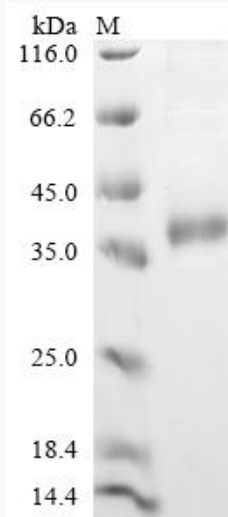
Protein Refseq [NP_032943](#)

 Tel: 1-631-559-9269 1-516-512-3133

 Email: info@creative-biomart.com  Fax: 1-631-938-8127

 45-1 Ramsey Road, Shirley, NY 11967, USA

SDS-PAGE



 Tel: 1-631-559-9269 1-516-512-3133

 Email: info@creative-biomart.com  Fax: 1-631-938-8127

 45-1 Ramsey Road, Shirley, NY 11967, USA