

Recombinant Rat Prg2 protein, His & GST-tagged

Cat. No. Prg2-1747R **Lot. No.** (See product label)

SPECIFICATION

Product Overview	Recombinant Rat Prg2 aa. (Gly80~Lys219 (Accession # Q63189)) fused with N-terminal His & GST tag was produced in E. coli cells.
Species	Rat
Source	E.coli
ProteinLength	Gly80~Lys219
Description	Human homolog is the primary component of the eosinophil granule crystalline core; may play a role in allergic response and asthma.
Form	Freeze-dried powder
Molecular Mass	Predicted Molecular Mass: 47.6kDa
Endotoxin	<1.0EU per 1ug (determined by the LAL method)
Purity	>95%
Characteristic	The isoelectric point is 8.7.
Applications	SDS-PAGE; WB; ELISA; IP.
Stability	The thermal stability is described by the loss rate of the target protein. The loss rate

 Tel: 1-631-559-9269 1-516-512-3133

 Email: info@creative-biomart.com  Fax: 1-631-938-8127

 45-1 Ramsey Road, Shirley, NY 11967, USA

was determined by accelerated thermal degradation test, that is, incubate the protein at 37°C for 48h, and no obvious degradation and precipitation were observed. (Referring from China Biological Products Standard, which was calculated by the Arrhenius equation.) The loss of this protein is less than 5% within the expiration date under appropriate storage condition.

Storage	Avoid repeated freeze/thaw cycles. Store at 2-8°C for one month. Aliquot and store at -80°C for 12 months.
Storage buffer	Supplied as lyophilized form in PBS, pH7.4, containing 5% sucrose, 0.01% sarcosyl.
Reconstitution	Reconstitute in sterile PBS, pH7.2-pH7.4.

GENE INFORMATION

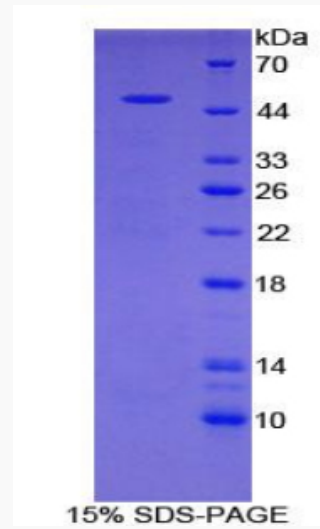
Gene Name	Prg2 proteoglycan 2 [<i>Rattus norvegicus</i> (Norway rat)]
Official Symbol	Prg2
Synonyms	Prg2; proteoglycan 2; bone marrow proteoglycan; BMPG; eosinophil major basic protein; proteoglycan 2, bone marrow
Gene ID	58826
mRNA Refseq	NM_031619.2
Protein Refseq	NP_113807.2
UniProt ID	Q63189

 Tel: 1-631-559-9269 1-516-512-3133

 Email: info@creative-biomart.com  Fax: 1-631-938-8127

 45-1 Ramsey Road, Shirley, NY 11967, USA

SDS-PAGE



 Tel: 1-631-559-9269 1-516-512-3133

 Email: info@creative-biomart.com  Fax: 1-631-938-8127

 45-1 Ramsey Road, Shirley, NY 11967, USA