

Recombinant Mouse Prkdc protein, His & T7-tagged

Cat. No. Prkdc-1774M Lot. No. (See product label)

SPECIFICATION

Product Overview	Recombinant Mouse Prkdc aa. (Ala3899~Met4128 (Accession # P97313)) fused with N-terminal His & T7 tag was produced in E. coli cells.
Species	Mouse
Source	E.coli
ProteinLength	Ala3899~Met4128
Form	Freeze-dried powder
Molecular Mass	Predicted Molecular Mass: 29.7kDa
Endotoxin	<1.0EU per 1ug (determined by the LAL method)
Purity	>95%
Applications	SDS-PAGE; WB; ELISA; IP.
Stability	The thermal stability is described by the loss rate. The loss rate was determined by accelerated thermal degradation test, that is, incubate the protein at 37°C for 48h, and no obvious degradation and precipitation were observed. The loss rate is less than 5% within the expiration date under appropriate storage condition.
Storage	Avoid repeated freeze/thaw cycles. Store at 2-8°C for one month. Aliquot and store at

 Tel: 1-631-559-9269 1-516-512-3133

 Email: info@creative-biomart.com  Fax: 1-631-938-8127

 45-1 Ramsey Road, Shirley, NY 11967, USA

-80°C for 12 months.

Storage buffer

Supplied as lyophilized form in 20mM Tris, 150mM NaCl, pH8.0, containing 1mM EDTA, 1mM DTT, 0.01% sarcosyl, 5% trehalose, and preservative.

Reconstitution

Reconstitute in sterile ddH₂O.

Isoelectric Point

6.8

GENE INFORMATION

Gene Name

Prkdc protein kinase, DNA activated, catalytic polypeptide [*Mus musculus* (house mouse)]

Official Symbol

Prkdc

Synonyms

Prkdc; protein kinase, DNA activated, catalytic polypeptide; p460; scid; slip; DNAPK; DNPK1; HYRC1; XRCC7; dxnph; DOXNPH; DNAPDcs; AI326420; AU019811; DNA-PKcs; DNA-dependent protein kinase catalytic subunit; DNA-PK catalytic subunit; doxorubicin nephropathy; severe combined immunodeficiency

Gene ID

19090

mRNA Refseq

NM_011159.2

Protein Refseq

NP_035289.2

UniProt ID

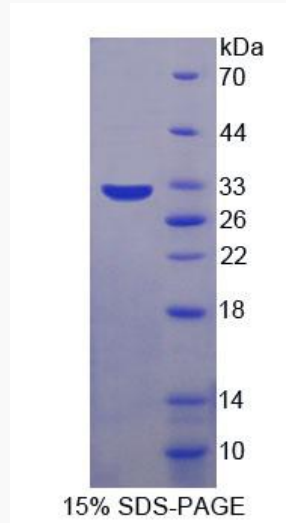
P97313

 Tel: 1-631-559-9269 1-516-512-3133

 Email: info@creative-biomart.com  Fax: 1-631-938-8127

 45-1 Ramsey Road, Shirley, NY 11967, USA

SDS-PAGE



 Tel: 1-631-559-9269 1-516-512-3133

 Email: info@creative-biomart.com  Fax: 1-631-938-8127

 45-1 Ramsey Road, Shirley, NY 11967, USA