

Recombinant Mouse Prkg1 protein, His&Myc-tagged

Cat. No. Prkg1-6843M Lot. No. (See product label)

SPECIFICATION

Product Overview	Recombinant Mouse Prkg1 protein(P0C605)(2-671aa), fused with N-terminal His tag and C-terminal Myc tag, was expressed in E.coli.
Species	Mouse
Source	E.coli
ProteinLength	2-671aa
Form	If the delivery form is liquid, the default storage buffer is Tris/PBS-based buffer, 5%-50% glycerol. If the delivery form is lyophilized powder, the buffer before lyophilization is Tris/PBS-based buffer, 6% Trehalose, pH 8.0.
Molecular Mass	83.7 kDa
Purity	Greater than 90% as determined by SDS-PAGE.
Storage	Store at -20°C/-80°C upon receipt, aliquoting is necessary for mutiple use. Avoid repeated freeze-thaw cycles.
Reconstitution	We recommend that this vial be briefly centrifuged prior to opening to bring the contents to the bottom. Please reconstitute protein in deionized sterile water to a concentration of 0.1-1.0 mg/mL. We recommend to add 5-50% of glycerol (final concentration) and aliquot for long-term storage at -20°C/-80°C.

 Tel: 1-631-559-9269 1-516-512-3133

 Email: info@creative-biomart.com  Fax: 1-631-938-8127

 45-1 Ramsey Road, Shirley, NY 11967, USA

AA Sequence

SELEEDFAKILMLKEERIKELEKRLSEKEEEEIQELKRKLHKCQSVLPVPSTHIGPRTR
 AQGISAEPQTYRSFHDLRQAFRKFTKRSERSKDLIKEAILDNDFMKNLELSQIQEIVDC
 MYPVEYGKDSCIIKEGDVGLVYVMEDGKVEVTKEGVKLCTMGPGKVFGEILYNC
 TRTATVKTLVNVKLWADRQCFQTIMMRTGLIKHTEYMEFLKSVPTFQSLPDEILSKL
 ADVLEETHYENGEYIIRQGARGDTFFIISKGQVNVNTRDSDPSEDVFLRTLKGDWF
 GEKALQGEDVRTANVIAAEAVTCLVIDRDSFKHLIGGLDDVSNKAYEDAEAKAKYEA
 EAAFFANLKLSDFNIIIDLGVGGFGRVELVQLKSEESKTFAMKILKKRHIVDTRQQEHI
 RSEKQIMQGAHSDFIVRLYRTFKDSKYLYMLMEACLGGELWTILRDRGSFEDSTTRF
 YTACVVEAFAYLHSGIIRDLKPENLILDHRGYAKLVDFGFACKIGFGKKTWTFCGT
 PEYVAPEIILNKGHDISADYWSLILMYELLTGSPFSGPDPMKTYNIILRGIDMIEFPK
 KIAKNAANLIKKLCRDNPSERLGNLKNVVKDIQKHKWFEGFNWEGLRKGLTPPIIPS
 VASPTDTSNFDSFPEDSDEPPPDDNSGWDIDF

GENE INFORMATION

Gene Name [Prkg1 protein kinase, cGMP-dependent, type I \[Mus musculus \]](#)

Official Symbol [Prkg1](#)

Synonyms PRKG1; protein kinase, cGMP-dependent, type I; cGMP-dependent protein kinase 1; cGK1; cGK 1; cGMP-dependent protein kinase I; CGKI; Prkg1b; Gm19690; Prkgr1b; AW125416; MGC132849;

Gene ID [19091](#)

mRNA Refseq [NM_001013833](#)

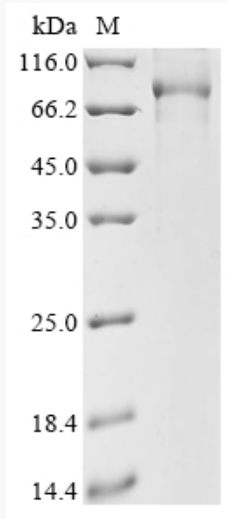
Protein Refseq [NP_001013855](#)

 Tel: 1-631-559-9269 1-516-512-3133

 Email: info@creative-biomart.com  Fax: 1-631-938-8127

 45-1 Ramsey Road, Shirley, NY 11967, USA

SDS-PAGE



 Tel: 1-631-559-9269 1-516-512-3133

 Email: info@creative-biomart.com  Fax: 1-631-938-8127

 45-1 Ramsey Road, Shirley, NY 11967, USA