

Active Recombinant Mouse Prolactin / Prl Protein

Cat. No. Prl-5130M Lot. No. (See product label)

SPECIFICATION

Product Overview	Purified recombinant protein of Mouse prolactin (Prl), transcript variant 1 without tag was expressed in E. coli.
Species	Mouse
Source	E.coli
ProteinLength	31-228 a.a.
Description	Low expression observed in reference dataset.
Bio-activity	Determined by its ability to induce the proliferation of rat Nb2-11 cells in the concentration range of 0.1-1.0 ng/mL.
Molecular Mass	22.5 kDa
AA Sequence	MLPICSAGDCQTSRLRELFDREVILSHYIHTLYTDMFIEFDKQYVQDREFMVKVINDCP TSSLATPEDKEQALKVPPEVLLNLILSLVQSSDPLFQLITGVGGIQEAPEYILSRAKEI EEQNKQLLEGVEKIIISQAYPEAKNGIYFVWSQLPSLQGVDEESKILSLRNTIRCLRR DSHKVDNFLKVLRCQIAHQNNC
Endotoxin	< 0.1 ng/μg of protein (< 1 EU/μg)
Purity	> 95% as determined by SDS-PAGE and Coomassie blue staining

 Tel: 1-631-559-9269 1-516-512-3133

 Email: info@creative-biomart.com  Fax: 1-631-938-8127

 45-1 Ramsey Road, Shirley, NY 11967, USA

Stability	Stable for at least 6 months from date of receipt under proper storage and handling conditions.
Storage	Store at -80 centigrade.
Storage Buffer	Lyophilized from a 0.2 μM filtered solution of 20 mM phosphate buffer, 100 mM NaCl, pH 7.2

GENE INFORMATION

Gene Name	Prl prolactin [Mus musculus (house mouse)]
Official Symbol	Prl
Synonyms	PRL; prolactin; Prl1a1; AV290867
Gene ID	19109
mRNA Refseq	NM_011164
Protein Refseq	NP_035294
UniProt ID	Q9CPQ2

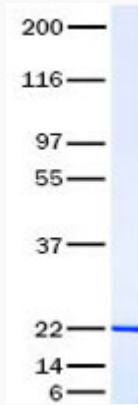
 Tel: 1-631-559-9269 1-516-512-3133

 Email: info@creative-biomart.com  Fax: 1-631-938-8127

 45-1 Ramsey Road, Shirley, NY 11967, USA



SDS-PAGE



Tel: 1-631-559-9269 1-516-512-3133

Email: info@creative-biomart.com Fax: 1-631-938-8127

45-1 Ramsey Road, Shirley, NY 11967, USA