

Active Recombinant Rat Prolactin / Prl protein

Cat. No. Prl-60R **Lot. No.** (See product label)

SPECIFICATION

Product Overview	Recombinant Rat Prl protein was expressed in Escherichia coli.
Species	Rat
Source	E.coli
ProteinLength	30-226 a.a.
Description	This gene encodes the anterior pituitary hormone prolactin. This secreted hormone is a growth regulator for many tissues, including cells of the immune system. It may also play a role in cell survival by suppressing apoptosis, and it is essential for lactation. Alternative splicing results in multiple transcript variants that encode the same protein.
Form	Lyophilized from a 0.2µm filtered concentrated solution in PBS, pH 7.4.
Bio-activity	Fully biologically active when compared to standard. The ED50 as determined by a cell proliferation assay using rat Nb2-11 cells is less than 1.0 ng/ml, corresponding to a specific activity of > 1.0 × 10 ⁶ IU/mg.
Molecular Mass	Approximately 22.6 kDa, a single non-glycosylated polypeptide chain containing 197 amino acids.
AA Sequence	LPVCSGGDCQTPLELFDREVMLSHYIHTLYTDMFIEFDKQYVQDREFIAKAINDCPT SSLATPEDKEQAQKVPPEVLLNLILSLVHSWNPFLQLITGLGGIHEAPDAIISRAKEIE

 Tel: 1-631-559-9269 1-516-512-3133

 Email: info@creative-biomart.com  Fax: 1-631-938-8127

 45-1 Ramsey Road, Shirley, NY 11967, USA

EQNKRLLEGIEKIISQAYPEAKGNEIYLVWSQLPSLQGVDEESKDLAFYNNIRCLRRD
SHKVDNYLKFLRCQIVHKNNC

Endotoxin Less than 0.1 EU/μg of rRtProlactin as determined by LAL method.

Purity >98% by SDS-PAGE and HPLC analysis.

Storage Use a manual defrost freezer and avoid repeated freeze-thaw cycles. 12 months from date of receipt, -20 to -70 centigrade as supplied. 1 month, 2 to 8 centigrade under sterile conditions after reconstitution. 3 months, -20 to -70 centigrade under sterile conditions after reconstitution.

Reconstitution We recommend that this vial be briefly centrifuged prior to opening to bring the contents to the bottom. Reconstitute in sterile distilled water or aqueous buffer containing 0.1 % BSA to a concentration of 0.1-1.0 mg/mL. Stock solutions should be apportioned into working aliquots and stored at ≤-20 centigrade. Further dilutions should be made in appropriate buffered solutions.

GENE INFORMATION

Gene Name Prl

Official Symbol Prl

Synonyms PRL; prolactin; prolactin family 1, subfamily a, member 1; PRLB; Prol; PRLSD1; Prl1a1; RNPROL; RATPRLSD1;

Gene ID 24683

mRNA Refseq NM_012629

 Tel: 1-631-559-9269 1-516-512-3133

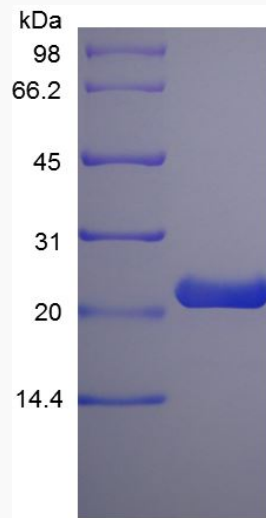
 Email: info@creative-biomart.com  Fax: 1-631-938-8127

 45-1 Ramsey Road, Shirley, NY 11967, USA

Protein Refseq NP_036761

UniProt ID P01237

SDS-PAGE of Pri-60R



 Tel: 1-631-559-9269 1-516-512-3133

 Email: info@creative-biomart.com  Fax: 1-631-938-8127

 45-1 Ramsey Road, Shirley, NY 11967, USA