

## Active Recombinant Mouse Prolactin / Prl Protein

Cat. No. Prl-63M Lot. No. (See product label)

### SPECIFICATION

<b>Product Overview</b>	Recombinant Mouse Prl protein was expressed in Escherichia coli.
<b>Species</b>	Mouse
<b>Source</b>	E.coli
<b>ProteinLength</b>	31-228 a.a.
<b>Description</b>	This gene encodes the anterior pituitary hormone prolactin. This secreted hormone is a growth regulator for many tissues, including cells of the immune system. It may also play a role in cell survival by suppressing apoptosis, and it is essential for lactation. Alternative splicing results in multiple transcript variants that encode the same protein.
<b>Form</b>	Lyophilized from a 0.2µm filtered concentrated solution in PBS, pH 7.4.
<b>Bio-activity</b>	Fully biologically active when compared to standard. The ED50 as determined by its ability to induce cAMP accumulation in murine MC3T3E1 cells is less than 50 ng/ml, corresponding to a specific activity of $> 2.0 \times 10^4$ IU/mg.
<b>Molecular Mass</b>	Approximately 22.4 kDa, a single non-glycosylated polypeptide chain containing 197 amino acids.
<b>AA Sequence</b>	LPICSAGDCQTSRLRELFDRVVILSHYIHTLYTDMFIEFDKQYVQDREFMVKVINDCPTS SLATPEDKEQALKVPPEVLLNLILSLVQSSSDPLFQLITGVGGIQEAPEYILSRAKEIEE

 Tel: 1-631-559-9269 1-516-512-3133

 Email: [info@creative-biomart.com](mailto:info@creative-biomart.com)  Fax: 1-631-938-8127

 45-1 Ramsey Road, Shirley, NY 11967, USA

QNKQLLEGVEKIISQAYPEAKNGIYFVWSQLPSLQGVDEESKILSLRNTIRCLRDS  
HKVDNFLKVLRCQIAHQNNC

**Endotoxin** Less than 0.1 EU/μg of rMuProlactin as determined by LAL method.

**Purity** >98% by SDS-PAGE and HPLC analysis.

**Storage** Use a manual defrost freezer and avoid repeated freeze-thaw cycles. 12 months from date of receipt, -20 to -70 centigrade as supplied. 1 month, 2 to 8 centigrade under sterile conditions after reconstitution. 3 months, -20 to -70 centigrade under sterile conditions after reconstitution.

**Reconstitution** We recommend that this vial be briefly centrifuged prior to opening to bring the contents to the bottom. Reconstitute in sterile distilled water or aqueous buffer containing 0.1 % BSA to a concentration of 0.1-1.0 mg/mL. Stock solutions should be apportioned into working aliquots and stored at ≤-20 centigrade. Further dilutions should be made in appropriate buffered solutions.

## GENE INFORMATION

**Gene Name** Prl

**Official Symbol** Prl

**Synonyms** PRL; prolactin; Prl1a1; AV290867;

**Gene ID** 19109

**mRNA Refseq** NM\_001163530

**Protein Refseq** NP\_001157002

 Tel: 1-631-559-9269 1-516-512-3133

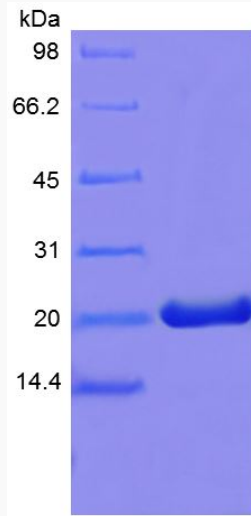
 Email: [info@creative-biomart.com](mailto:info@creative-biomart.com)  Fax: 1-631-938-8127

 45-1 Ramsey Road, Shirley, NY 11967, USA

UniProt ID

Q3TT66

SDS-PAGE of Pri-63M



 Tel: 1-631-559-9269 1-516-512-3133

 Email: [info@creative-biomart.com](mailto:info@creative-biomart.com)  Fax: 1-631-938-8127

 45-1 Ramsey Road, Shirley, NY 11967, USA