

Recombinant Rat Prl protein, His & T7-tagged

Cat. No. Prl-7819R Lot. No. (See product label)

SPECIFICATION

Product Overview	Recombinant Rat Prl aa. (Leu30~Cys226 (Accession # P01237)) fused with N-terminal His & T7 tag was produced in E. coli cells.
Species	Rat
Source	E.coli
ProteinLength	Leu30~Cys226
Description	Induces lactation; may facilitate decidual growth and placentation; promotes prostate epithelial cell proliferation.
Form	Freeze-dried powder
Molecular Mass	Predicted Molecular Mass: 26.4kDa
Endotoxin	<1.0EU per 1g (determined by the LAL method)
Purity	>95%
Characteristic	The isoelectric point is 5.9.
Applications	SDS-PAGE; WB; ELISA; IP
Stability	The thermal stability is described by the loss rate. The loss rate was determined by

 Tel: 1-631-559-9269 1-516-512-3133

 Email: info@creative-biomart.com  Fax: 1-631-938-8127

 45-1 Ramsey Road, Shirley, NY 11967, USA

accelerated thermal degradation test, that is, incubate the protein at 37°C for 48h, and no obvious degradation and precipitation were observed. The loss rate is less than 5% within the expiration date under appropriate storage condition.

Storage

Avoid repeated freeze/thaw cycles. Store at 2-8°C for one month. Aliquot and store at -80°C for 12 months.

Storage buffer

Supplied as lyophilized form in PBS, pH7.4, containing 5% trehalose, 0.01% sarcosyl

Reconstitution

Reconstitute in sterile PBS, pH7.2-pH7.4.

GENE INFORMATION

Gene Name

Prl prolactin [*Rattus norvegicus* (Norway rat)]

Official Symbol

Prl

Synonyms

Prl; prolactin; Gha1; PRLB; Prol; PRLSD1; Prl1a1; RNPROL; RATPRLSD1; growth hormone a1; prolactin family 1, subfamily a, member 1;

Gene ID

24683

mRNA Refseq

NM_012629.1

Protein Refseq

NP_036761.1

UniProt ID

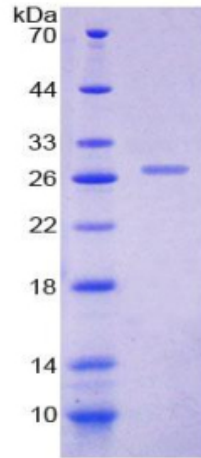
P01237

 Tel: 1-631-559-9269 1-516-512-3133

 Email: info@creative-biomart.com  Fax: 1-631-938-8127

 45-1 Ramsey Road, Shirley, NY 11967, USA

SDS-PAGE



 Tel: 1-631-559-9269 1-516-512-3133

 Email: info@creative-biomart.com  Fax: 1-631-938-8127

 45-1 Ramsey Road, Shirley, NY 11967, USA