

Recombinant Mouse Prl3d1 Protein, His-tagged

Cat. No. Prl3d1-1983M Lot. No. (See product label)

SPECIFICATION

Product Overview	Recombinant Mouse Prl3d1 Protein (Ser30-Cys224) with N-His tag was expressed in E. coli.
Species	Mouse
Source	E.coli
ProteinLength	Ser30-Cys224
Description	Predicted to enable hormone activity and prolactin receptor binding activity. Predicted to be involved in several processes, including female pregnancy; positive regulation of lactation; and positive regulation of receptor signaling pathway via JAK-STAT. Located in extracellular space. Is expressed in several structures, including extraembryonic component; genitourinary system; and genitourinary system mesenchyme.
Form	Freeze-dried powder
Molecular Mass	Predicted Molecular Mass: 26.1 kDa Accurate Molecular Mass: 28 kDa
Purity	> 90%
Applications	Positive Control; Immunogen; SDS-PAGE; WB.

 Tel: 1-631-559-9269 1-516-512-3133

 Email: info@creative-biomart.com  Fax: 1-631-938-8127

 45-1 Ramsey Road, Shirley, NY 11967, USA

Stability	The thermal stability is described by the loss rate. The loss rate was determined by accelerated thermal degradation test, that is, incubate the protein at 37 centigrade for 48h, and no obvious degradation and precipitation were observed. The loss rate is less than 5% within the expiration date under appropriate storage condition.
Storage	Avoid repeated freeze/thaw cycles. Store at 2-8 centigrade for one month. Aliquot and store at -80 centigrade for 12 months.
Storage Buffer	PBS, pH7.4, containing 0.01% SKL, 1mM DTT, 5% Trehalose and Proclin300.
Reconstitution	Reconstitute in 20mM Tris, 150mM NaCl (pH8.0) to a concentration of 0.1-1.0 mg/mL. Do not vortex.

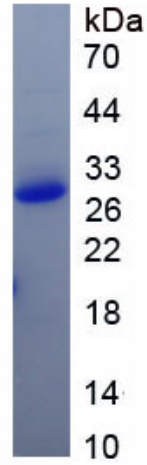
GENE INFORMATION

Gene Name	PrI3d1 prolactin family 3, subfamily d, member 1 [Mus musculus (house mouse)]
Official Symbol	PrI3d1
Synonyms	PrI3d1; prolactin family 3, subfamily d, member 1; prolactin-3D1; PI1; Csh1; Ghd4; PL-I; PI-1; PL-Ia; mPL-I; AI325057; PL-I-alpha; chorionic somatomammotropin hormone 1; growth hormone d4; placental lactogen 1; placental lactogen I; placental lactogen-I alpha; prolactin-like 2
Gene ID	18775
mRNA Refseq	NM_001205322
Protein Refseq	NP_001192251
UniProt ID	P18121

 Tel: 1-631-559-9269 1-516-512-3133

 Email: info@creative-biomart.com  Fax: 1-631-938-8127

 45-1 Ramsey Road, Shirley, NY 11967, USA



 Tel: 1-631-559-9269 1-516-512-3133

 Email: info@creative-biomart.com  Fax: 1-631-938-8127

 45-1 Ramsey Road, Shirley, NY 11967, USA